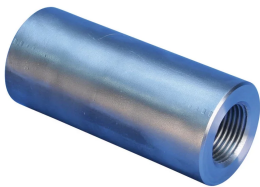


# S13 Metric Parallel Bolt Coupler, Plain, Worldwide Design, 50 mm, 85 mm dia, 88 mm, M56 Thread

## CATALOG NUMBER

**EL50TS13N**



## CERTIFICATIONS



## FEATURES

Provides continuity between reinforcing bar and ISO® 965 metric all-thread rod or bolts

May be used to anchor load-bearing equipment to foundations, columns or walls

Machined from non-weldable grades of material, but can be tack welded

## PRODUCT ATTRIBUTES

Material: Steel

Finish: Plain

Design Version: Worldwide (Globally Available Materials)

Rebar Size, Metric: 50 mm

Diameter (Ø): 85 mm

Length (L): 171mm

A: 88 mm

Bar Depth (BD): 70mm

Thread Size (TS): M56

Thread Depth (TD): 60mm

Unit Weight: 4.83 kg

Designed to Meet: AASHTO;ABNT NBR 8548:1984;ACI 318 Type 1 (125% Specified Yield);ACI 318 Type 2 (Specified Tensile);ACI 349;ACI 359;AS3600

Package Quantity: 4

## ADDITIONAL PRODUCT DETAILS

---

Bar dimensions and weights listed may vary by region. Coupler sizes not shown may be available by special order. Contact your nVent LENTON representative for more information.

Coupler supplied without bolt.

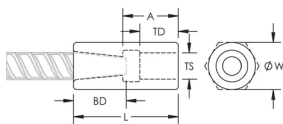
Bolt may be replaced by threaded rod of same class/grade.

All calculations based on a minimum bolt engagement equal to Thread Depth (TD).

System Capacity based on bolt to coupler connection. For rebar to coupler connection, refer to applicable building codes and approvals or contact your nVent LENTON representative.

Bolt-to-Coupler Capacity (kN)					
Part Number	Grade 4.8	Grade 5.8	Grade 8.8	Grade 10.9	Grade 12.9
EL10S13N	33.7	42.1	67.4	67.7	67.7
EL12S13AN	224.2	280.3	448.5	526.3	526.3
EL12S13N	62.7	78.3	109.8	109.8	109.8
EL14S13N	77.0	96.2	154.0	192.5	193.4
EL16S13N	97.9	122.4	162.0	162.0	162.0
EL18S13N	121.4	151.7	242.7	303.4	364.1
EL20S13AN	121.4	151.7	242.7	303.4	356.8
EL20S13BN	97.9	122.4	195.8	244.8	289.4
EL20S13N	141.0	176.3	282.0	332.3	332.3
EL22S13N	183.8	229.7	367.5	449.9	449.9
EL25S13AN	141.0	176.3	282.0	352.5	422.9
EL25S13BN	97.9	122.4	195.8	244.8	293.8
EL25S13N	224.2	280.3	448.5	560.5	560.5
EL28S13N	277.4	346.8	554.8	693.6	728.0
EL30S13N	326.7	408.4	653.4	816.7	890.7
EL32S13AN	224.2	280.3	448.5	560.6	672.7
EL32S13N	390.3	487.9	780.6	783.8	783.8
EL34S13N	390.3	487.9	780.6	783.8	783.8
EL36S13N	448.4	560.5	896.7	1120.9	1197.1
EL38S13N	522.4	653.0	1044.8	1054.8	1054.8
EL40S13AN	589.3	736.6	1178.5	1312.4	1312.4
EL40S13BN	326.7	408.4	653.4	816.7	980.1
EL40S13CN	224.2	280.3	448.5	560.6	672.7
EL40S13M33N	522.4	653.0	1044.8	1054.8	1054.8
EL40S13N	522.4	653.0	1044.8	1054.8	1054.8
EL50TS13M33N	812.0	1015.0	1624.0	2030.0	2168.3
EL50TS13N	812.0	1015.0	1624.0	2030.0	2168.3

## DIAGRAMS



## WARNING

nVent products shall be installed and used only as indicated in nVent's product instruction sheets and training materials. Instruction sheets are available at [www.nvent.com](http://www.nvent.com) and from your nVent customer service representative. Improper installation, misuse, misapplication or other failure to completely follow nVent's instructions and warnings may cause product malfunction, property damage, serious bodily injury and death and/or void your warranty.

#### North America

+1.800.753.9221

Option 1 – Customer Care

Option 2 – Technical

Support

#### Europe

Netherlands:

+31 800-0200135

France:

+33 800 901 793

#### Europe

Germany:

800 1890272

Other Countries:

+31 13 5835404

#### APAC

Shanghai:

+ 86 21 2412 1618/19

Sydney:

+61 2 9751 8500



Our powerful portfolio of brands:

**CADDY**

**ERICO**

**HOFFMAN**

**ILSCO**

**SCHROFF**

**TRACHTE**