

C14 Two-Piece Weldable Coupler



nVent LENTON C14 Two-Piece Weldable Couplers provide a quick and easy solution for connecting reinforcing steel bar (rebar) perpendicular to structural steel sections or plates. The coupler is internally taper threaded on one end with the other end or exterior surface prepared for welding. The C14 Two-Piece weldable coupler materials have been optimized to facilitate simple welding processes. Typically, the coupler and mating steel sections will not require pre- or post-heating to aid in the welding process.

CERTIFICATIONS



FEATURES

Machined from weldable grades of steel

J-groove chamfer reduces required weld area

Easy to weld

SPECIFICATIONS

Table 1/2

Catalog Number	Rebar Size, Metric	Rebar Size, US	Rebar Size, Canada	Hex Width (W)	Diameter 1 (Ø1)	Diameter 2 (Ø2)
EL10C14N	10 mm	#3		27 mm		25 mm
EL12C14N	12 mm	#4	10M	30 mm		30 mm
EL14C14N	14 mm			30 mm		30 mm
EL16C14N	16 mm	#5	15M		35 mm	40 mm

CatalogNumber	Rebar Size, Metric	Rebar Size, US	Rebar Size, Canada	Hex Width (W)	Diameter 1(Ø1)	Diameter 2(Ø2)
EL18C14N	18 mm				40 mm	40 mm
EL57TC14N	57 mm	#18	55M		110 mm	100 mm
EL20C14N	20 mm	#6	20M		45 mm	45 mm
EL22C14N	22 mm	#7			45 mm	45 mm
EL25C14N	25 mm	#8	25M		50 mm	50 mm
EL28C14N	28 mm	#9	30M		55 mm	55 mm
EL36C14N	36 mm	#11	35M		70 mm	70 mm
EL32C14N	32 mm	#10			60 mm	60 mm
EL34C14N	34 mm				70 mm	65 mm
EL30C14N	30 mm				60 mm	60 mm
EL50TC14N	50 mm				95 mm	90 mm
EL38C14N	38 mm				75 mm	65 mm
EL40C14N	40 mm				75 mm	75 mm
EL43TC14N	43 mm	#14	45M		85 mm	80 mm

Table 2/2

Catalog Number	Diameter 3 (Ø3)	Length (L)	Bar Depth (BD)	Unit Weight	Package Quantity
EL10C14N	18mm	68mm	18mm	0.27 kg	80
EL12C14N	24mm	70mm	19mm	0.36 kg	50
EL14C14N	22mm	77mm	21mm	0.39 kg	50

Catalog Number	Diameter 3 (Ø3)	Length (L)	Bar Depth (BD)	Unit Weight	Package Quantity
EL16C14N	30mm	81mm	24mm	0.54 kg	30
EL18C14N	29mm	87mm	29mm	0.72 kg	25
EL57TC14N	67mm	221mm	83mm	12.3 kg	1
EL20C14N	35mm	104mm	35mm	1.11 kg	15
EL22C14N	32mm	109mm	37mm	1.13 kg	15
EL25C14N	37mm	116mm	40mm	1.49 kg	12
EL28C14N	41mm	122mm	42mm	1.9 kg	8
EL36C14N	41mm	144mm	52mm	3.5 kg	5
EL32C14N	45mm	131mm	45mm	2.4 kg	6
EL34C14N	45mm	142mm	55mm	3.5 kg	5
EL30C14N	48mm	133mm	52mm	2.45 kg	6
EL50TC14N	67mm	193mm	70mm	8.3 kg	2
EL38C14N	57mm	148mm	53mm	4.32 kg	4
EL40C14N	54mm	156mm	57mm	4.45 kg	4
EL43TC14N	57mm	180mm	66mm	6.5 kg	3

Designed to Meet:

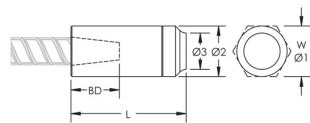
AASHTO;ABNT NBR 8548:1984;ACI 318 Type 1 (125% Specified Yield);ACI 318 Type 2 (Specified Tensile);ACI 349;ACI 359;AS3600

ADDITIONAL PRODUCT DETAILS

Bar dimensions and weights listed may vary by region. Coupler sizes not shown may be available by special order. Contact your nVent LENTON representative for more information.

The design of the weld, the selection of electrode, and other relevant choices depend on the chemical and physical properties of the structural steel to which the couplers are welded. Engineers who design assemblies should adhere to all appropriate regulations.

DIAGRAMS



WARNING

nVent products shall be installed and used only as indicated in nVent's product instruction sheets and training materials. Instruction sheets are available at www.nvent.com and from your nVent customer service representative. Improper installation, misuse, misapplication or other failure to completely follow nVent's instructions and warnings may cause product malfunction, property damage, serious bodily injury and death and/or void your warranty.

North America

+1.800.753.9221
Option 1 – Customer Care
Option 2 – Technical
Support

Europe

Netherlands:
+31 800-0200135
France:
+33 800 901 793

Europe

Germany:
800 1890272
Other Countries:
+31 13 5835404

APAC

Shanghai:
+ 86 21 2412 1618/19
Sydney:
+61 2 9751 8500



Our powerful portfolio of brands:

CADDY ERICO HOFFMAN ILSCO SCHROFF TRACHTE