

# nVent ERIFLEX Flexbus HCBC Plate



## CERTIFICATIONS



## FEATURES

Rigid tinned copper part provides strong electrical contact to maintain braid expansion during compression

HCBC Plate allows Flexbus Conductor insulation to overlap the connection palm

Tinned copper allows for copper or aluminum conductor connections

Installs quickly and easily

RoHS compliant

## SPECIFICATIONS

**Material:** Copper

**Finish:** Tinned

Table 1/2

Catalog Number	Article Number	A	B	C	D	Thickness (T)
FLEXPLATE50	508180	65 mm	63 mm	45 mm	41 mm	5 mm
FLEXPLATE100	508181	115 mm	63 mm	45 mm	51 mm	5 mm

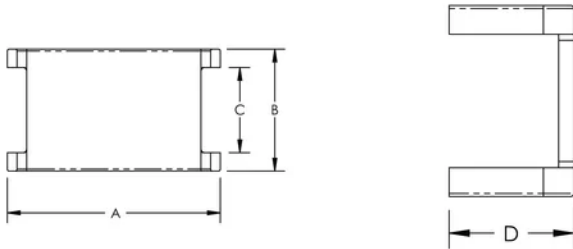
Table 2/2

Catalog Number	Article Number	Conductor Size	Unit Weight
FLEXPLATE50	508180	220 mm <sup>2</sup> , 360 mm <sup>2</sup> , 545 mm <sup>2</sup> , 640 mm <sup>2</sup>	0.16 kg
FLEXPLATE100	508181	960 mm <sup>2</sup> , 1280 mm <sup>2</sup> , 1810 mm <sup>2</sup>	0.32 kg

## ADDITIONAL PRODUCT DETAILS

It is mandatory to use the HCBC Clamp associated with the HCBC Plate for proper Flexbus Conductor connection.

## DIAGRAMS



## WARNING

nVent products shall be installed and used only as indicated in nVent's product instruction sheets and training materials. Instruction sheets are available at [www.nvent.com](http://www.nvent.com) and from your nVent customer service representative. Improper installation, misuse, misapplication or other failure to completely follow nVent's instructions and warnings may cause product malfunction, property damage, serious bodily injury and death and/or void your warranty.

### North America

+1.800.753.9221  
Option 1 – Customer Care  
Option 2 – Technical  
Support

### Europe

Netherlands:  
+31 800-0200135  
France:  
+33 800 901 793

### Europe

Germany:  
800 1890272  
Other Countries:  
+31 13 5835404

### APAC

Shanghai:  
+ 86 21 2412 1618/19  
Sydney:  
+61 2 9751 8500



Our powerful portfolio of brands:

**CADDY ERICO HOFFMAN ILSCO SCHROFF TRACHTE**