

EB-142/166 Dual Neutral Busbar Support



CERTIFICATIONS



FEATURES

Provides support for two EB-142 or EB-166 Earthing & Neutral Busbars

Quick and easy installation

Halogen free

RoHS compliant

SPECIFICATIONS

Table 1/2

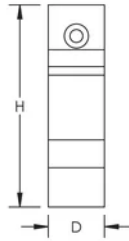
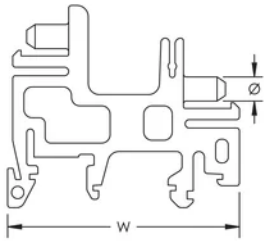
Catalog Number	Article Number	Material	Flammability Rating	Insulation Voltage	Working Temperature	Complies With
EB142-166SUP2	568670	Polyamide	UL® 94V-0	690	130 °C Max	IEC® 60998-2-1

Table 2/2

Catalog Number	Article Number	Height (H)	Width (W)	Depth (D)	Diameter (Ø)	Unit Weight
----------------	----------------	------------	-----------	-----------	--------------	-------------

EB142- 166SUP2	568670	37 mm	41 mm	10mm	4 mm	0.01 kg
-------------------	--------	-------	-------	------	------	---------

DIAGRAMS



WARNING

nVent products shall be installed and used only as indicated in nVent's product instruction sheets and training materials. Instruction sheets are available at www.nvent.com and from your nVent customer service representative. Improper installation, misuse, misapplication or other failure to completely follow nVent's instructions and warnings may cause product malfunction, property damage, serious bodily injury and death and/or void your warranty.

North America

+1.800.753.9221
Option 1 – Customer Care
Option 2 – Technical
Support

Europe

Netherlands:
+31 800-0200135
France:
+33 800 901 793

Europe

Germany:
800 1890272
Other Countries:
+31 13 5835404

APAC

Shanghai:
+ 86 21 2412 1618/19
Sydney:
+61 2 9751 8500



Our powerful portfolio of brands:

CADDY ERICO HOFFMAN ILSCO SCHROFF TRACHTE