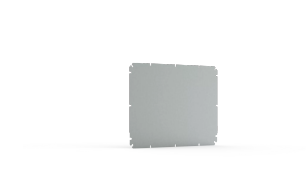


# Mounting Plate, OMP



The steel mounting plate contributes to speeding up the assembly of the terminal box, since it can be machined easily and equipped with components before being mounted.

## FEATURES

---

Description: Steel mounting plate for OABP/OPCP boxes.

Material: 1.5 mm galvanized steel.

Pack quantity: 1 piece.

## SPECIFICATIONS

**Material:** Galvanized Steel

**Finish:** Plated

Table 1/1

Catalog Number	E-Number	Height	Width	Fits Enclosure Size	Panel Size	Enclosure Material
OMP2030E	2503326	200mm	300mm	200 x 300mm	160 x 260mm	ABS, Polycarbonate
OMP2040E	2503327	200mm	400mm	200 x 400mm	160 x 360mm	ABS, Polycarbonate
OMP2020E	2503325	200mm	200mm	200 x 200mm	160 x 160mm	ABS, Polycarbonate
OMP3030E	2503328	300mm	300mm	300 x 300mm	260 x 260mm	ABS, Polycarbonate
OMP3040E	2503329	300mm	400mm	300 x 400mm	260 x 360mm	ABS, Polycarbonate
OMP3060E	2503330	300mm	600mm	300 x 600mm	260 x 560mm	ABS, Polycarbonate
OMP4060E	2503331	400mm	600mm	400 x 600mm	360 x 560mm	ABS, Polycarbonate

## WARNING

nVent products shall be installed and used only as indicated in nVent's product instruction sheets and training materials. Instruction sheets are available at [www.nvent.com](http://www.nvent.com) and from your nVent customer service representative. Improper installation, misuse, misapplication or other failure to completely follow nVent's instructions and warnings may cause product malfunction, property damage, serious bodily injury and death and/or void your warranty.



Our powerful portfolio of brands:

**CADDY   ERICO   HOFFMAN   ILSCO   SCHROFF   TRACHTE**