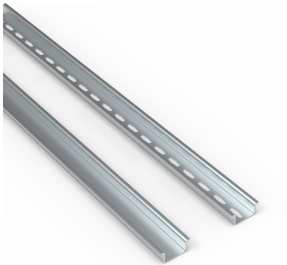


DIN Rails, PP



A DIN rail that can be cut to size. It facilitates both procurement and installation.

FEATURES

Description: According to EN 60715.

Material: Galvanized steel.

Pack quantity: 15 x 2 m.

The DIN rails are supplied in lengths of 2 metres allowing customers to cut them to size in order to install modular components

Modular components can be easily installed in a fast way onto the enclosure's mounting plate reducing the required mounting time

With holes: PP0515H, PP0735H, PP1532H, PP1535H; Without holes: PP0735, PP1532, PP1535

Omega type: PP0515H, PP0735, PP0735H, PP1535, PP1535H; G type: PP1532, PP1532H

Hole pattern 18 x 5.2 mm: PP0515H, PP0735H, PP1532H, PP1535H

SPECIFICATIONS

Finish: Galvanized

Material: Steel

Table 1/1

Catalog Number	E-Number	Height	Width	Holes Included	Hole Type	Quick Ship
PP0515H	2929801	5mm	15mm	Yes	Omega	No
PP0735	2929804	7.5mm	35mm	No	Omega	No
PP0735H	2929805	7.5mm	35mm	Yes	Omega	No
PP1532	2929811	15mm	32mm	No	G	No
PP1532H	2929812	15mm	32mm	Yes	G	No
PP1535	2929807	15mm	35mm	No	Omega	No
PP1535H	2929808	15mm	35mm	Yes	Omega	No

Hole Quantity: 18

Hole Diameter: 5.2mm min

WARNING

nVent products shall be installed and used only as indicated in nVent's product instruction sheets and training materials. Instruction sheets are available at www.nvent.com and from your nVent customer service representative. Improper installation, misuse, misapplication or other failure to completely follow nVent's instructions and warnings may cause product malfunction, property damage, serious bodily injury and death and/or void your warranty.



Our powerful portfolio of brands:

CADDY ERICO HOFFMAN ILSCO SCHROFF TRACHTE