

nVent CADDY Speed Link SLK with Hook



CERTIFICATIONS



FEATURES

Complete system includes wire, locking device and pre-assembled hook end fitting

Hooks to a wide range of nVent CADDY fasteners

Fastens to the building structure or hanging services by looping around and hooking to wire rope

Easy to remove for applications requiring maintenance

Spring latch helps provide secure connection

Insert cable through hole and use bottom side of hook as an end stop

Also available in Y-hook configuration

SPECIFICATIONS

Static Load Safety Factor:	5:1
Finish:	Electrogalvanized
Material:	Steel;Polypropylene;Zinc Alloy
Complies With:	SMACNA HVAC-DCS

Table 1/3

Catalog Number	Article Number	E-Number	Wire Rope Diameter	Wire Rope Length	A	B
----------------	----------------	----------	--------------------	------------------	---	---

SLK15L1	196508	1568223	1.5 mm	1m	48 mm	18 mm
SLK15L10	196513	1568228	1.5 mm	10m	48 mm	18 mm
SLK15L2	196509	1568224	1.5 mm	2m	48 mm	18 mm
SLK15L2R2	196614	1568177	1.5 mm	2m	48 mm	18 mm
SLK15L3	196510	1568225	1.5 mm	3m	48 mm	18 mm
SLK15L3R2	196615	1568178	1.5 mm	3m	48 mm	18 mm
SLK15L5	196511	1568226	1.5 mm	5m	48 mm	18 mm
SLK2L1	196537	1568229	2 mm	1m	57 mm	22 mm
SLK2L10	196542	1568234	2 mm	10m	57 mm	22 mm
SLK2L2	196538	1568230	2 mm	2m	57 mm	22 mm
SLK2L2R2	196619		2 mm	2m	57 mm	22 mm
SLK2L3	196539	1568231	2 mm	3m	57 mm	22 mm
SLK2L3R2	196620		2 mm	3m	57 mm	22 mm
SLK2L5	196540	1568232	2 mm	5m	57 mm	22 mm
SLK3L1	196700	1568125	3 mm	1m	57.6 mm	23.2 mm
SLK3L10	196705	1568126	3 mm	10m	57.6 mm	23.2 mm
SLK3L2	196701	1568129	3 mm	2m	57.6 mm	23.2 mm
SLK3L3	196702	1568133	3 mm	3m	57.6 mm	23.2 mm
SLK3L3R2	196625	1568134	3 mm	3m	57.6 mm	23.2 mm

SLK3L5	196703	1568139	3 mm	5m	57.6 mm	23.2 mm
SLK3L5R2	196626	1568140	3 mm	5m	57.6 mm	23.2 mm

Table 2/3						
Catalog Number	Article Number	E-Number	C	Height (H)	Width (W)	Thickness (T)
SLK15L1	196508	1568223	4.5 mm	55 mm	19 mm	12.5 mm
SLK15L10	196513	1568228	4.5 mm	55 mm	19 mm	12.5 mm
SLK15L2	196509	1568224	4.5 mm	55 mm	19 mm	12.5 mm
SLK15L2R2	196614	1568177	4.5 mm	55 mm	19 mm	12.5 mm
SLK15L3	196510	1568225	4.5 mm	55 mm	19 mm	12.5 mm
SLK15L3R2	196615	1568178	4.5 mm	55 mm	19 mm	12.5 mm
SLK15L5	196511	1568226	4.5 mm	55 mm	19 mm	12.5 mm
SLK2L1	196537	1568229	5.5 mm	55 mm	19 mm	12.5 mm
SLK2L10	196542	1568234	5.5 mm	55 mm	19 mm	12.5 mm
SLK2L2	196538	1568230	5.5 mm	55 mm	19 mm	12.5 mm
SLK2L2R2	196619		5.5 mm	55 mm	19 mm	12.5 mm
SLK2L3	196539	1568231	5.5 mm	55 mm	19 mm	12.5 mm
SLK2L3R2	196620		5.5 mm	55 mm	19 mm	12.5 mm
SLK2L5	196540	1568232	5.5 mm	55 mm	19 mm	12.5 mm
SLK3L1	196700	1568125	6.1 mm	62 mm	24 mm	16 mm

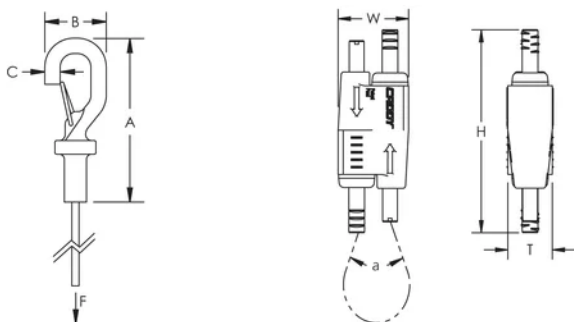
CatalogNumber	Article Number	E-Number	C	Height (H)	Width (W)	Thickness (T)
SLK3L10	196705	1568126	6.1 mm	62 mm	24 mm	16 mm
SLK3L2	196701	1568129	6.1 mm	62 mm	24 mm	16 mm
SLK3L3	196702	1568133	6.1 mm	62 mm	24 mm	16 mm
SLK3L3R2	196625	1568134	6.1 mm	62 mm	24 mm	16 mm
SLK3L5	196703	1568139	6.1 mm	62 mm	24 mm	16 mm
SLK3L5R2	196626	1568140	6.1 mm	62 mm	24 mm	16 mm

Table 3/3

Catalog Number	Article Number	E-Number	Angle (a)	Static Load	Certifications
SLK15L1	196508	1568223	90 ° Max	195N	UL, cUL, SMACNA
SLK15L10	196513	1568228	90 ° Max	195N	SMACNA, UL, cUL
SLK15L2	196509	1568224	90 ° Max	195N	SMACNA, UL, cUL
SLK15L2R2	196614	1568177	90 ° Max	195N	SMACNA, UL, cUL
SLK15L3	196510	1568225	90 ° Max	195N	UL, cUL, SMACNA
SLK15L3R2	196615	1568178	90 ° Max	195N	UL, cUL, SMACNA
SLK15L5	196511	1568226	90 ° Max	195N	SMACNA, UL, cUL
SLK2L1	196537	1568229	90 ° Max	440N	SMACNA, UL, cUL
SLK2L10	196542	1568234	90 ° Max	440N	SMACNA, UL, cUL
SLK2L2	196538	1568230	90 ° Max	440N	UL, cUL, SMACNA
SLK2L2R2	196619		90 ° Max	440N	UL, cUL, SMACNA

Catalog Number	Article Number	E-Number	Angle (a)	Static Load	Certifications
SLK2L3	196539	1568231	90 ° Max	440N	SMACNA, UL, cUL
SLK2L3R2	196620		90 ° Max	440N	SMACNA, UL, cUL
SLK2L5	196540	1568232	90 ° Max	440N	UL, cUL, SMACNA
SLK3L1	196700	1568125	90 ° Max	890N	SMACNA
SLK3L10	196705	1568126	90 ° Max	890N	SMACNA
SLK3L2	196701	1568129	90 ° Max	890N	SMACNA
SLK3L3	196702	1568133	90 ° Max	890N	SMACNA
SLK3L3R2	196625	1568134	90 ° Max	890N	SMACNA
SLK3L5	196703	1568139	90 ° Max	890N	SMACNA
SLK3L5R2	196626	1568140	90 ° Max	890N	SMACNA

DIAGRAMS



WARNING

nVent products shall be installed and used only as indicated in nVent's product instruction sheets and training materials. Instruction sheets are available at www.nvent.com and from your nVent customer service representative. Improper installation, misuse, misapplication or other failure to completely follow nVent's instructions and warnings may cause product malfunction, property damage, serious bodily injury and death and/or void your warranty.

North America

+1.800.753.9221

Option 1 – Customer Care

Option 2 – Technical

Support

Europe

Netherlands:

+31 800-0200135

France:

+33 800 901 793

Europe

Germany:

800 1890272

Other Countries:

+31 13 5835404

APAC

Shanghai:

+ 86 21 2412 1618/19

Sydney:

+61 2 9751 8500



Our powerful portfolio of brands:

CADDY

ERICO

HOFFMAN

ILSCO

SCHROFF

TRACHTE

