

nVent CADDY Rod Lock Channel Nut



CERTIFICATIONS



FEATURES

Provides fast universal attachment of threaded rod and hardware to standard strut profiles

Can be used to prefabricate assemblies which can be quickly pushed onto previously installed threaded rods

Works with slightly damaged threads and minor burrs on the threaded rod

SPECIFICATIONS

Material: Cast Iron

Finish: Electrogalvanized

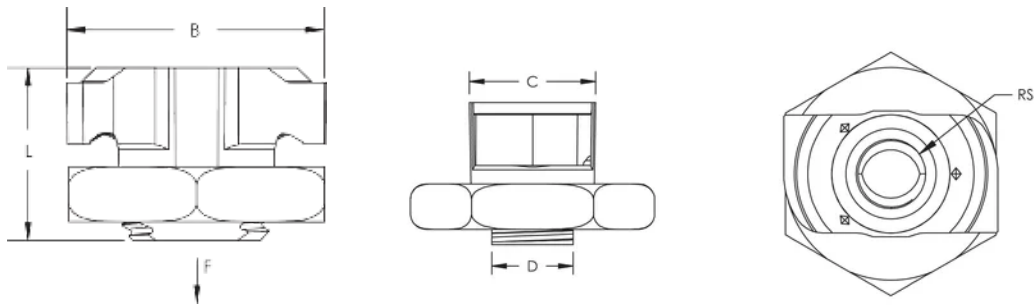
Table 1/2

Catalog Number	Article Number	E-Number	Rod Size (RS)	B	C	D
CRLSM10EG	390004	1523161	10	35 mm	19.5 mm	13.5 mm
CRLSM8EG	390003	1523160	8	35 mm	19.5 mm	13.5 mm

Table 2/2

Catalog Number	Article Number	E-Number	Length (L)	Static Load
CRLSM10EG	390004	1523161	23mm	3750N
CRLSM8EG	390003	1523160	23mm	2750N

DIAGRAMS



WARNING

nVent products shall be installed and used only as indicated in nVent's product instruction sheets and training materials. Instruction sheets are available at www.nvent.com and from your nVent customer service representative. Improper installation, misuse, misapplication or other failure to completely follow nVent's instructions and warnings may cause product malfunction, property damage, serious bodily injury and death and/or void your warranty.

North America

+1.800.753.9221

Option 1 – Customer Care

Option 2 – Technical

Support

Europe

Netherlands:

+31 800-0200135

France:

+33 800 901 793

Europe

Germany:

800 1890272

Other Countries:

+31 13 5835404

APAC

Shanghai:

+ 86 21 2412 1618/19

Sydney:

+61 2 9751 8500



Our powerful portfolio of brands:

CADDY

ERICO

HOFFMAN

ILSCO

SCHROFF

TRACHTE

