

# nVent CADDY Rod Lock Beam Clamp



## CERTIFICATIONS



## FEATURES

Prefabricated assemblies easily lift and lock into place, helping to save time and money

Easy "push-to-install" design allows installers to simply push the threaded rod through the mounting hole, instantly holding it in position

Lock nut can be finger tightened, locking the rod in place

Works with slightly damaged threads and minor burrs on the threaded rod

Conforms with Federal Specification WW-H-171 (Type 23), Manufacturers Standardization Society ANSI®/MSS-SP-58 (Type 19 and 23)

## SPECIFICATIONS

**Material:** Cast Iron

**Finish:** Electrogalvanized

Table 1/2

| Catalog Number | Article Number | E-Number | Rod Size (RS) | Flange Thickness (FT) | Height (H) | Length (L) |
|----------------|----------------|----------|---------------|-----------------------|------------|------------|
| CRLBM8EG       | 390001         | 1511574  | M8            | 3 - 10 mm             | 30 mm      | 52.3mm     |

| CatalogNumber | Article Number | E-Number | Rod Size (RS) | Flange Thickness (FT) | Height (H) | Length (L) |
|---------------|----------------|----------|---------------|-----------------------|------------|------------|
| CRLBM10EG     | 390002         | 1511575  | M10           | 3 - 10 mm             | 30 mm      | 52.3mm     |

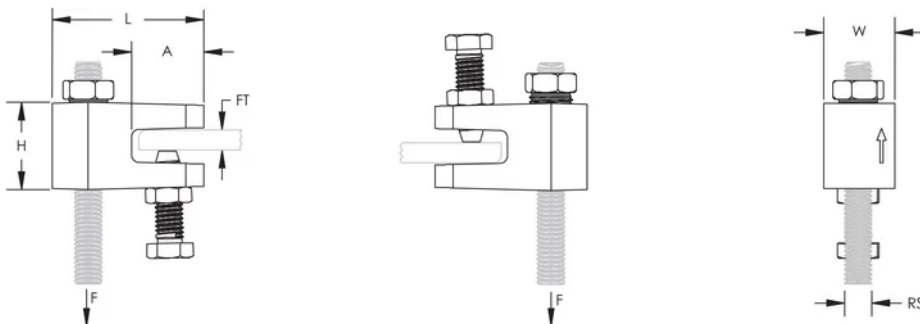
Table 2/2

| Catalog Number | Article Number | E-Number | Width (W) | A       | Static Load 1 (F1) | Static Load 2 (F2) |
|----------------|----------------|----------|-----------|---------|--------------------|--------------------|
| CRLBM8EG       | 390001         | 1511574  | 25.3 mm   | 24.9 mm | 1100N              | 1400N              |
| CRLBM10EG      | 390002         | 1511575  | 25.3 mm   | 24.9 mm | 1100N              | 2200N              |

## ADDITIONAL PRODUCT DETAILS

Static Load 1 represents 1/8" to 3/16" (3 mm to 5 mm) flange thickness. Static Load 2 represents 1/4" to 3/8" (6 mm to 10 mm) flange thickness.

## DIAGRAMS



## WARNING

nVent products shall be installed and used only as indicated in nVent's product instruction sheets and training materials. Instruction sheets are available at [www.nvent.com](http://www.nvent.com) and from your nVent customer service representative. Improper installation, misuse, misapplication or other failure to completely follow nVent's instructions and warnings may cause product malfunction, property damage, serious bodily injury and death and/or void your warranty.

#### North America

+1.800.753.9221

Option 1 – Customer Care

Option 2 – Technical

Support

#### Europe

Netherlands:

+31 800-0200135

France:

+33 800 901 793

#### Europe

Germany:

800 1890272

Other Countries:

+31 13 5835404

#### APAC

Shanghai:

+ 86 21 2412 1618/19

Sydney:

+61 2 9751 8500



Our powerful portfolio of brands:

**CADDY**

**ERICO**

**HOFFMAN**

**ILSCO**

**SCHROFF**

**TRACHTE**

