

C-Channel Beam Clamp with U-Bolt



FEATURES

Beam clamp for C-Profiles

Complete with plate, U-bolt and fixings

SPECIFICATIONS

Finish: Electrogalvanized

Material: Steel

Table 1/3

Catalog Number	Article Number	E-Number	Channel Type	Rod Size (RS)	Flange Thickness (FT)	Width (W)
BCE03	585120	1500722	E0L, E0, E1, E2L, E2, E3	6	16 mm Max	60 mm
BCE4	585110	1500660	E4, E5	8	16 mm Max	70 mm

Table 2/3

Catalog Number	Article Number	E-Number	Thickness (T)	A	B	C
BCE03	585120	1500722	4 mm	20 mm	36 mm	70 mm
BCE4	585110	1500660	6 mm	24 mm	39 mm	100 mm

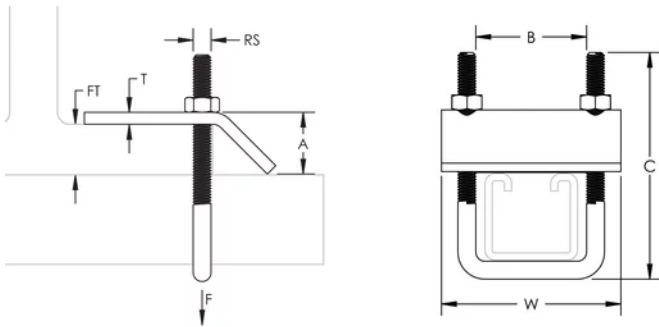
Table 3/3

Catalog Number	Article Number	E-Number	Static Load
BCE03	585120	1500722	1250N
BCE4	585110	1500660	2400N

ADDITIONAL PRODUCT DETAILS

Static Load is dependent on channel type and length.

DIAGRAMS



WARNING

nVent products shall be installed and used only as indicated in nVent's product instruction sheets and training materials. Instruction sheets are available at www.nvent.com and from your nVent customer service representative. Improper installation, misuse, misapplication or other failure to completely follow nVent's instructions and warnings may cause product malfunction, property damage, serious bodily injury and death and/or void your warranty.

North America

+1.800.753.9221
Option 1 – Customer Care
Option 2 – Technical
Support

Europe

Netherlands:
+31 800-0200135
France:
+33 800 901 793

Europe

Germany:
800 1890272
Other Countries:
+31 13 5835404

APAC

Shanghai:
+ 86 21 2412 1618/19
Sydney:
+61 2 9751 8500



Our powerful portfolio of brands:

CADDY ERICO HOFFMAN ILSCO SCHROFF TRACHTE

