

310M Universal Beam Clamp, Thick Flange



CERTIFICATIONS



FEATURES

Universal beam clamp for thick beams

SPECIFICATIONS

Material: Cast Iron

Finish: Electrogalvanized

Table 1/2

Catalog Number	Article Number	E-Number	Hole Size (HS)	Hole Type	Flange Thickness (FT)	A
310M12	388890	1500738	12 mm	Threaded	31.8 mm Max	28.6 mm
310M10	389890	1500737	10 mm	Threaded	31.8 mm Max	28.6 mm

Table 2/2

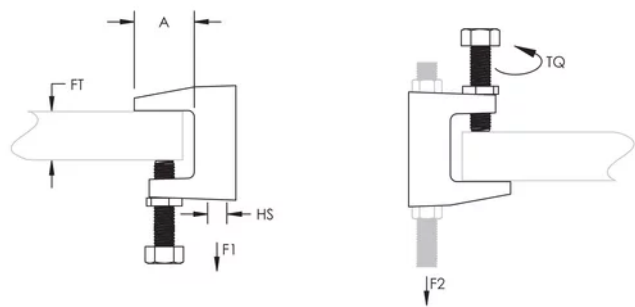
Catalog Number	Article Number	E-Number	Torque (TQ)	Static Load 1 (F1)	Static Load 2 (F2)
----------------	----------------	----------	-------------	--------------------	--------------------

310M12	388890	1500738	15 N·m	4200N	3300N
310M10	389890	1500737	7 N·m	2200N	1100N

ADDITIONAL PRODUCT DETAILS

Setscrew must be tightened and torqued onto the sloped side of the I-beam.

DIAGRAMS



WARNING

nVent products shall be installed and used only as indicated in nVent's product instruction sheets and training materials. Instruction sheets are available at www.nvent.com and from your nVent customer service representative. Improper installation, misuse, misapplication or other failure to completely follow nVent's instructions and warnings may cause product malfunction, property damage, serious bodily injury and death and/or void your warranty.

North America

+1.800.753.9221
Option 1 – Customer Care
Option 2 – Technical
Support

Europe

Netherlands:
+31 800-0200135
France:
+33 800 901 793

Europe

Germany:
800 1890272
Other Countries:
+31 13 5835404

APAC

Shanghai:
+ 86 21 2412 1618/19
Sydney:
+61 2 9751 8500



Our powerful portfolio of brands:

CADDY ERICO HOFFMAN ILSCO SCHROFF TRACHTE

