

# 1-1 Hole Angle Bracket



## FEATURES

Used to create metal frames with nVent CADDY Eristrut channels

## SPECIFICATIONS

Table 1/2

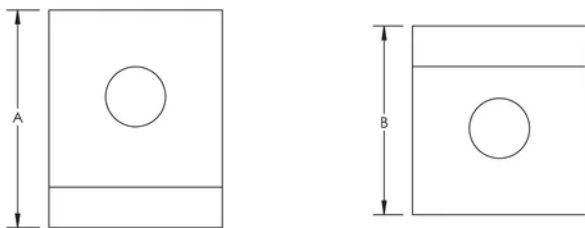
Catalog Number	Article Number	E-Number	Material	Finish	A	B
ZW200	313330	1523182	Steel	Hot-Dip Galvanized	50 mm	48 mm
ZW201	313340	1522786	Steel	Hot-Dip Galvanized	58 mm	42 mm
ZWA201	387610	1522741	Steel	Hot-Dip Galvanized	58 mm	42 mm
ZWA200EG	387601		Steel	Electrogalvanized	50 mm	47 mm
ZWA200	387600	1522739	Steel	Hot-Dip Galvanized	50 mm	48 mm
ZWA200S6	388670	1522703	Stainless Steel 316 (EN 1.4401)		50 mm	48 mm

Table 2/2

Catalog Number	Article Number	E-Number	Screw Included	Screw Diameter (Sc)	Screw Length (L)
----------------	----------------	----------	----------------	---------------------	------------------

ZW200	313330	1523182	Yes	10 mm	25mm
ZW201	313340	1522786	Yes	10 mm	25mm
ZWA201	387610	1522741	No		
ZWA200EG	387601		No		
ZWA200	387600	1522739	No		
ZWA200S6	388670	1522703	No		

## DIAGRAMS



## WARNING

nVent products shall be installed and used only as indicated in nVent's product instruction sheets and training materials. Instruction sheets are available at [www.nvent.com](http://www.nvent.com) and from your nVent customer service representative. Improper installation, misuse, misapplication or other failure to completely follow nVent's instructions and warnings may cause product malfunction, property damage, serious bodily injury and death and/or void your warranty.

#### North America

+1.800.753.9221

Option 1 – Customer Care

Option 2 – Technical

Support

#### Europe

Netherlands:

+31 800-0200135

France:

+33 800 901 793

#### Europe

Germany:

800 1890272

Other Countries:

+31 13 5835404

#### APAC

Shanghai:

+ 86 21 2412 1618/19

Sydney:

+61 2 9751 8500



Our powerful portfolio of brands:

**CADDY**

**ERICO**

**HOFFMAN**

**ILSCO**

**SCHROFF**

**TRACHTE**

