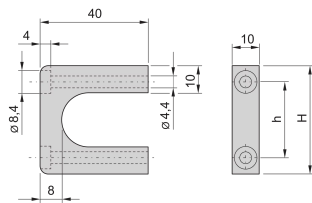


# MultipacPRO Front Handle, One-Piece, Width 10 mm

## Power Utilities



The front handles can be mounted and provide an easier to mount assembly. The handles can be assembled from the front side.

### CERTIFICATIONS



### FEATURES

Load-carrying capacity 30 kg/pair

Assembly on the front panel

Can be used for the aluminium or sheet metal versions

### SPECIFICATIONS

Table 1/2

Catalog Number	Rack Height	Package Quantity	Handle Type	Color	Material	Product Family
20860-256	1 U	2	Straight	Silver	Aluminum	MultipacPRO, Frame Type Plug-In Unit
20860-257	2 U	2	Straight	Silver	Aluminum	MultipacPRO, Frame Type Plug-In Unit

CatalogNumber	Rack Height	Package Quantity	Handle Type	Color	Material	Product Family
20860-259	4 U	2	Straight	Silver	Aluminum	MultipacPRO, Frame Type Plug-In Unit
20860-260	5 U	2	Straight	Silver	Aluminum	MultipacPRO, Frame Type Plug-In Unit
20860-258	3 U	2	Straight	Silver	Aluminum	MultipacPRO, Frame Type Plug-In Unit

Table 2/2

Catalog Number	Product Type	Width	Works With
20860-256	Handle	10 mm	Chassis, Front Panels
20860-257	Handle	10 mm	Chassis, Front Panels
20860-259	Handle	10 mm	Chassis, Front Panels
20860-260	Handle	10 mm	Chassis, Front Panels
20860-258	Handle	10 mm	Chassis, Front Panels

## WARNING

nVent products shall be installed and used only as indicated in nVent's product instruction sheets and training materials. Instruction sheets are available at [www.nvent.com](http://www.nvent.com) and from your nVent customer service representative. Improper installation, misuse, misapplication or other failure to completely follow nVent's instructions and warnings may cause product malfunction, property damage, serious bodily injury and death and/or void your warranty.



Our powerful portfolio of brands:

**CADDY   ERICO   HOFFMAN   ILSCO   SCHROFF   TRACHTE**