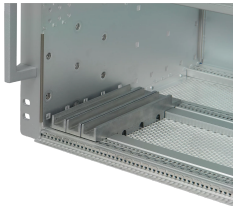


EuropacPRO Guide Rails to Accomodate Conduction Cooled Assemblies

The adapter is the interface between a subrack and the conduction cooled assemblies (CCAs).



CERTIFICATIONS



FEATURES

Adapter to hold conduction cooled assemblies (CCAs) in subracks

SPECIFICATIONS

- Material:** Aluminum
- Works With:** Subracks; Cases
- Product Family:** EuropacPRO; RatiopacPRO; RatiopacPRO AIR; CompacPRO; PropacPRO
- Product Type:** Guide Rail

Table 1/2

Catalog Number	Type	Package Quantity	Groove Width	Finish	Length	Package Unit
24566-004	Conduction Cooled Assembly VPX	2	13.3	Passivated	160mm	Pair

CatalogNumber	Type	Package Quantity	Groove Width	Finish	Length	Package Unit
24566-005	Conduction Cooled Assembly CompactPCI	2	13.3	Passivated	160mm	Pair

Table 2/2

Catalog Number	Quick Ship
24566-004	No
24566-005	No

ADDITIONAL PRODUCT DETAILS

Suitable for heavy and rugged horizontal rails.

WARNING

nVent products shall be installed and used only as indicated in nVent's product instruction sheets and training materials. Instruction sheets are available at www.nvent.com and from your nVent customer service representative. Improper installation, misuse, misapplication or other failure to completely follow nVent's instructions and warnings may cause product malfunction, property damage, serious bodily injury and death and/or void your warranty.

North America

All locations
+1.763.422.2661
Chat with us:
nvent.com/schroff

Europe

Straubenhardt, Germany
+49.7082.794.0
Betschdorf, France
+33.3.88.90.64.90
Warsaw, Poland
+48.22.209.98.35
Assago, Italy
+39.02.932.7141
Chat with us:
nvent.com/schroff

Asia

Shanghai, China
+86.21.2412.6943
Qingdao, China
+86.532.8771.6101
Singapore
+65.6768.5800
Shin-Yokohama, Japan
+81.45.476.0271
Chat with us:
nvent.com/schroff

Middle East & India

Dubai, United Arab Emirates
+971.4.378.1700
Bangalore, India
+91.80.6715.2001
Istanbul, Turkey
+90.216.250.7374
Chat with us:
nvent.com/schroff



Our powerful portfolio of brands:

CADDY ERICO HOFFMAN ILSCO SCHROFF TRACHTE