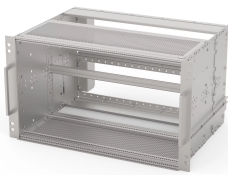


EuropacPRO 19" Subrack Kit for Railway, Shielded, SNCF, CompactPCI

Power Utilities

Subrack for Railway applications, conform to SNCF Standard, shielded version for CompactPCI applications.



CERTIFICATIONS



FEATURES

SNCF listed, EuropacPRO-fer, tested to NF F 61-005 and NF F 60-002

The 19" bracket is firmly fixed to the side panel (tox-cold welded) and is especially suited for high mechanical stresses (vibration resistance)

Lateral support bars to NFF standard facilitate insertion of subrack into the (cabinet) frame. The double 19" screwing position adds to additionally safety (NFF standard)

IP 20, in accordance with IEC 60529

EMC of approximately 40 dB at 1 GHz, 30 dB at 2 GHz, assuming that the front is covered with shielded front panels, testing in accordance with VG 95373 part 15

Aluminum construction

Modifications such as cutouts, different finishes or dimensions available

Supplied as space-saving flat-pack

SPECIFICATIONS

Table 1/3

Catalog Number	Rack Height	Rack Width	Package Quantity	For Mounting	Board Depth	EMC Gasket Type
21500-046	6 U	84 HP	1	Backplane	160 mm	Textile
21500-047	3 U	84 HP	1	Backplane	160 mm	Textile
21500-069	3 U	36 HP	1	Backplane	160 mm	Textile
21500-072	6 U	36 HP	1	Backplane	160 mm	Textile

Table 2/3

Catalog Number	Shock and Vibration Tolerance	Handle Included	Mounting	Complies With	Depth	EMC Shielding
21500-046	5 g (force)	Yes	Rack	IEC 60297-3-103, IEEE 1101.10, SNCF NFF 61005, SNCF NFF 60002	320 mm	Yes
21500-047	5 g (force)	Yes	Rack	IEC 60297-3-103, IEEE 1101.10, SNCF NFF 61005, SNCF NFF 60002	320 mm	Yes
21500-069	5 g (force)	Yes	Rack	IEC 60297-3-103, IEEE 1101.10, SNCF NFF 61005, SNCF NFF 60002	320 mm	Yes
21500-072	5 g (force)	Yes	Rack	IEC 60297-3-103, IEEE 1101.10, SNCF NFF 61005, SNCF NFF 60002	320 mm	Yes

Table 3/3

Catalog Number	Product Type	Static Load	Certifications
----------------	--------------	-------------	----------------

21500-046	Subrack/Chassis	15 kgf	RoHS, SNCF
21500-047	Subrack/Chassis	15 kgf	RoHS, SNCF
21500-069	Subrack/Chassis	15 kgf	RoHS
21500-072	Subrack/Chassis	15 kgf	RoHS

ADDITIONAL PRODUCT DETAILS

Fer = ferroviaire = French Railways, 1 T = 4 HP = 20.32 mm Receptacle/mounting frame for subracks, stainless steel, 9 T or 21 T on request.

Version 9 T available on request; Test reports available online.

Guide rails color according to IEEE 1101.10 red = space for CPU-board; grey = space for peripheral boards; green = space for CompactPCI; 19"-power supplies 0,1" offset.

Individual configuration: broad range of variants in height, width and depth; guide rails for a wide variety of applications; interior options; accessories and mounting material.

WARNING

nVent products shall be installed and used only as indicated in nVent's product instruction sheets and training materials. Instruction sheets are available at www.nvent.com and from your nVent customer service representative. Improper installation, misuse, misapplication or other failure to completely follow nVent's instructions and warnings may cause product malfunction, property damage, serious bodily injury and death and/or void your warranty.



Our powerful portfolio of brands:

CADDY ERICO HOFFMAN ILSCO SCHROFF TRACHTE