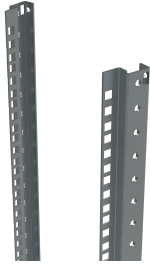


Mounting Profiles 19-Inch , CIPD



These profiles allow for the installation of additional 19" equipment within the side of the enclosure. They can also be used to support heavy equipment mounted in the front of the enclosure.

FEATURES

Description: Side universal 19" punching. For additional internal support.

Material: 2 mm zinc plated steel.

Pack quantity: 1 pair.

Mounting requirements: To be used in conjunction with CIB or CID profiles. For partial height mounting the CIWR is required.

SPECIFICATIONS

Thickness: 2mm
Material: Mild Steel
Finish: Zinc Plated

Table 1/1

Catalog Number	Height	Width	Depth	Rack Units	Enclosure Material	Quick Ship
CIPD47	2200mm	45mm	15mm	47U	Mild Steel	No
CIPD42	2000mm	45mm	15mm	42U	Mild Steel	No
CIPD38	1800mm	45mm	15mm	38U	Mild Steel	No
CIPD33	1600mm	45mm	15mm	33U	Mild Steel	No

WARNING

nVent products shall be installed and used only as indicated in nVent's product instruction sheets and training materials. Instruction sheets are available at www.nvent.com and from your nVent customer service representative. Improper installation, misuse, misapplication or other failure to completely follow nVent's instructions and warnings may cause product malfunction, property damage, serious bodily injury and death and/or void your warranty.



Our powerful portfolio of brands:

CADDY ERICO HOFFMAN ILSCO SCHROFF TRACHTE