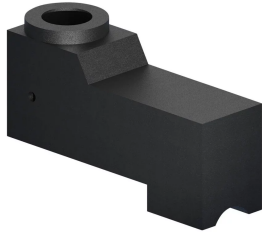


Horizontal Pouring Basin, Top Fill, Extended



Extended top fill horizontal pouring basins are used when structural interferences are directly above the tap hole in the sleeve.

FEATURES

Made from heat-resistant graphite

Durable, re-usable and long lasting

Designed for use with T-Series and B-Series horizontal top fill sleeves

SPECIFICATIONS

Material: Graphite

Table 1/2

Catalog Number	Diameter (Ø)	Length 1 (L1)	Length 2 (L2)	Width (W)	Height 1 (H1)	Height 2 (H2)
RBHA9037M	95 mm	229 mm	70 mm	76 mm	140mm	99mm
RBHA6050E	57 mm	152 mm	70 mm	76 mm	140mm	127mm
RBHA6037F	64 mm	152 mm	70 mm	76 mm	140mm	99mm
RBHA6050F	64 mm	152 mm	70 mm	76 mm	140mm	127mm
RBHA7037J	76 mm	178 mm	70 mm	76 mm	140mm	99mm
RBHA9735U	35 mm	248 mm	70 mm	76 mm	140mm	92mm

CatalogNumber	Diameter (Ø)	Length 1 (L1)	Length 2 (L2)	Width (W)	Height 1 (H1)	Height 2 (H2)
RBHA9735X	38 mm	248 mm	70 mm	76 mm	140mm	92mm
RBHA9740A	41 mm	248 mm	70 mm	76 mm	140mm	102mm
RBHA9740C	48 mm	248 mm	70 mm	76 mm	140mm	102mm

Table 2/2

Catalog Number	Package Quantity
RBHA9037M	1
RBHA6050E	1
RBHA6037F	1
RBHA6050F	1
RBHA7037J	1
RBHA9735U	1
RBHA9735X	1
RBHA9740A	1
RBHA9740C	1

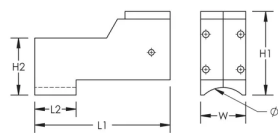
ADDITIONAL PRODUCT DETAILS

RBHA pouring basins require one RBM2890S pouring basin frame (sold separately).

Prior to installation, please read and understand all of the detailed instructions and safety notices provided in the nVent LENTON Cadweld Rebar Splicing System Instruction Manual.

Sizes not shown may be available by special order. Contact your nVent LENTON representative for more information.

DIAGRAMS



WARNING

nVent products shall be installed and used only as indicated in nVent's product instruction sheets and training materials. Instruction sheets are available at www.nvent.com and from your nVent customer service representative. Improper installation, misuse, misapplication or other failure to completely follow nVent's instructions and warnings may cause product malfunction, property damage, serious bodily injury and death and/or void your warranty.

North America

+1.800.753.9221
Option 1 – Customer Care
Option 2 – Technical
Support

Europe

Netherlands:
+31 800-0200135
France:
+33 800 901 793

Europe

Germany:
800 1890272
Other Countries:
+31 13 5835404

APAC

Shanghai:
+ 86 21 2412 1618/19
Sydney:
+61 2 9751 8500



Our powerful portfolio of brands:

CADDY ERICO HOFFMAN ILSCO SCHROFF TRACHTE