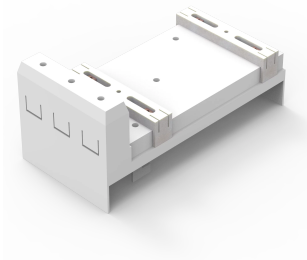


# Universal Busbar Adapter 200-250A, WO60



Universal busbar adapters with movable fastening rails.

## INDUSTRY STANDARDS

---

UL

CSA

GL

DNV-GL

## FEATURES

---

Description: 3-pole universal busbar adapter 200 - 250 A, with movable fastening rails with M4 slide nuts for safe mounting of the switching devices.

Rated voltage: 690 V

For busbars: 12, 15, 20, 25, 30 × 5, 10

Power dissipation at 80% load: 10.6 W (32214), 22.2 W (32168)

Pack quantity: 1 pc.

Approvals: CSA,UL,GL DNV GL

For busbars: 12, 15, 20, 25, 30 × 5, 10

Power dissipation at 80% load: 10.6 W (32214), 22.2 W (32168)

SPECIFICATIONS

Table 1/1						
Catalog Number	Height	Width	Depth	Material	Finish	Color
32168	320mm	110mm	101mm	Plastic, Steel	Smooth	Light Gray
32214	222mm	108mm	101mm	Plastic, Steel	Smooth	Light Gray

WARNING

nVent products shall be installed and used only as indicated in nVent's product instruction sheets and training materials. Instruction sheets are available at [www.nvent.com](http://www.nvent.com) and from your nVent customer service representative. Improper installation, misuse, misapplication or other failure to completely follow nVent's instructions and warnings may cause product malfunction, property damage, serious bodily injury and death and/or void your warranty.



Our powerful portfolio of brands:

CADDY   ERICO   HOFFMAN   ILSCO   SCHROFF   TRACHTE