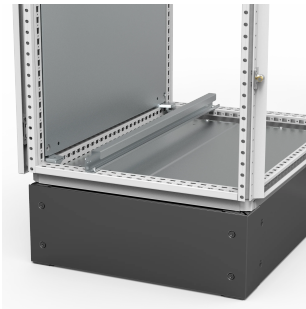


# Inside Cable Fixing Bars, CAB, 45x800x25mm, Zinc Plated, Mild Steel

## CATALOG NUMBER

### CAB800



This adjustable cable bar provides a safe way of securing cables inside the enclosure. External strains are avoided, protecting the installed equipment from damage.

## FEATURES

Description: Mounted above the bottom plates. Holds standard cable clamps CAC to secure incoming cables. Fully adjustable in depth. When EMC shielded earthing cables are connected to the support bar the Faraday effect will be kept intact for maximum EMI shielding.

Material: 2 mm zinc plated steel.

Pack quantity: 2 bars with mounting accessories.

Mounting requirements: Add CAC clamps depending on diameter of the cable(s).

## PRODUCT ATTRIBUTES

Height: 45mm

Width: 800mm

Depth: 25mm

Enclosure Material: Mild Steel

Material: Mild Steel

Finish: Zinc Plated

Thickness: 2mm

Package Quantity: 2

Weight: 2.6kg

## WARNING

---

nVent products shall be installed and used only as indicated in nVent's product instruction sheets and training materials. Instruction sheets are available at [www.nvent.com](http://www.nvent.com) and from your nVent customer service representative. Improper installation, misuse, misapplication or other failure to completely follow nVent's instructions and warnings may cause product malfunction, property damage, serious bodily injury and death and/or void your warranty.



Our powerful portfolio of brands:

**CADDY   ERICO   HOFFMAN   ILSCO   SCHROFF   TRACHTE**