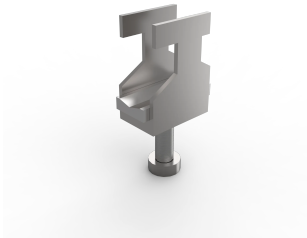


Cable Clamps, CAC



The cable clamps secures cables into position and relieves any external strains which in turn helps prevent equipment damage.

FEATURES

Description: To secure incoming cables onto the fixing bars CAB and CABP. Holds the cable in position and supports the weight.

Material: Zinc plated steel.

Pack quantity: 25 clamps.

Mounting requirements: Add CAB/CABP to mount the cable clamps CAC.

SPECIFICATIONS

Thickness: 2mm
Material: Mild Steel
Finish: Zinc Plated

Table 1/1

Catalog Number	Height	Width	Depth	Enclosure Material	Product Family	Cable Diameter Range
CAC0612	64mm	25mm	19mm	Mild Steel, Stainless Steel	Free-Standing	6 – 12mm
CAC1014	64mm	25mm	19mm	Mild Steel, Stainless Steel	Free-Standing	10 – 14mm
CAC1216	64mm	25mm	19mm	Mild Steel, Stainless Steel	Free-Standing	12 – 16mm
CAC5864	64mm	25mm	19mm	Mild Steel, Stainless Steel	Free-Standing	58 – 64mm
CAC1418	64mm	25mm	19mm	Mild Steel, Stainless Steel	Free-Standing	14 – 18mm
CAC1822	64mm	25mm	19mm	Mild Steel, Stainless Steel	Free-Standing	18 – 22mm
CAC2226	64mm	25mm	19mm	Mild Steel, Stainless Steel	Free-Standing	22 – 26mm
CAC2630	64mm	25mm	19mm	Mild Steel, Stainless Steel	Free-Standing	26 – 30mm
CAC3034	64mm	25mm	19mm	Mild Steel, Stainless Steel	Free-Standing	30 – 34mm
CAC3438	64mm	25mm	19mm	Mild Steel, Stainless Steel	Free-Standing	34 – 38mm
CAC3842	64mm	25mm	19mm	Mild Steel, Stainless Steel	Free-Standing	38 – 42mm
CAC4246	64mm	25mm	19mm	Mild Steel, Stainless Steel	Free-Standing	42 – 46mm

WARNING

nVent products shall be installed and used only as indicated in nVent's product instruction sheets and training materials. Instruction sheets are available at www.nvent.com and from your nVent customer service representative. Improper installation, misuse, misapplication or other failure to completely follow nVent's instructions and warnings may cause product malfunction, property damage, serious bodily injury and death and/or void your warranty.



Our powerful portfolio of brands:

CADDY ERICO HOFFMAN ILSCO SCHROFF TRACHTE