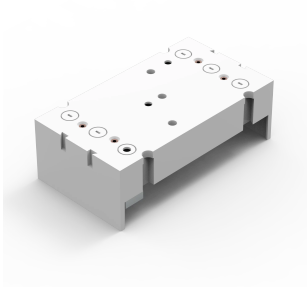


# Busbar Adapter 250A, W060



Busbar adapters adapted to the component manufacturer's design.

## INDUSTRY STANDARDS

UL

CSA

GL

## FEATURES

Description: 3-pole busbar adapter 250 A, adapted to the component manufacturer's design.

Rated voltage: 690 V

Rated current: 250 A

For busbars: 12, 15, 20, 25, 30 × 5, 10

Power dissipation at 80% load: 26.1 W (32023), 10 W (32156)

Width: 105 mm

Height: 190 mm

Pack quantity: 1 pc.

Approvals: CSA,UL,GL

SPECIFICATIONS

Table 1/1						
Catalog Number	Height	Width	Depth	Material	Finish	Color
32156	190mm	105mm	50mm	Plastic, Mild Steel	Plated	Black, Light Gray
32023	190mm	105mm	63mm	Plastic, Mild Steel	Plated	Black, Light Gray

WARNING

nVent products shall be installed and used only as indicated in nVent's product instruction sheets and training materials. Instruction sheets are available at [www.nvent.com](http://www.nvent.com) and from your nVent customer service representative. Improper installation, misuse, misapplication or other failure to completely follow nVent's instructions and warnings may cause product malfunction, property damage, serious bodily injury and death and/or void your warranty.



Our powerful portfolio of brands:

CADDY   ERICO   HOFFMAN   ILSCO   SCHROFF   TRACHTE