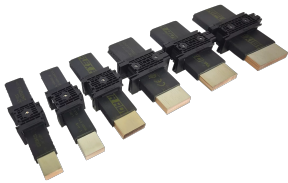


# nVent ERIFLEX IFBS Support Kit for Flexibar and IBSB Advanced



nVent ERIFLEX IBSB and Flexibar Advanced Bracing System (IFBS) has been designed for the nVent ERIFLEX Flexibar Advanced and IBSB braided conductors range. The IFBS is an economic solution to hold and fasten Flexibar and IBSB conductors between two pieces of electrical equipment. This compact fastening solution offers adjustable, low center distance between phases for easy and tidy alignment on Molded Case Circuit Breakers (MCCB) or other compact electrical devices. The IFBS Support Kit can be mounted on an enclosure back plate or a C-shaped profile. Due to its versatile nature, the conductors can be mounted side-by-side or on top, with one or more conductors per phase, making the IFBS quick and easy to install. Additionally, IFBS offers safe and reliable protection through its IEC® 61439-1 certification and composition of low smoke, halogen free, flame retardant materials that are naturally resistant against high temperatures.

## CERTIFICATIONS



## FEATURES

Suitable for nVent ERIFLEX Flexibar and IBSB braided conductors from 20 to 63mm in width and all conductors sizes (100A to 1600A)

Solution with small form factor offering a clean setup between phases for easy alignment on MCCB's or other compact electrical devices

Conductor compression system designed to adapt to any conductor depth, up to ten layers of nVent ERIFLEX Flexibar Advanced

Optional nVent ERIFLEX IFBS Reinforcement Kit for High Short-Circuit available for situations needing to withstand high short-circuit values up to 130kA peak

IEC® 61439-1 certified and RoHS compliant

Kit includes 12 retaining blocks

## SPECIFICATIONS

<b>Working Temperature:</b>	-40 to 130 °C
<b>Material:</b>	Steel;Glass Fibre Reinforced Polyamide
<b>Complies With:</b>	IEC® 60695-2-11 (Glow Wire Test 960 °C);IEC® 61439.1
<b>Flammability Rating:</b>	UL® 94V-0

Table 1/3

Catalog Number	Article Number	Conductor Width	Conductor Thickness	Conductor Type	A	B
IFBS20	553591	20 mm	2 - 10 mm	Flexibar, IBSB Advanced 25, 50, 70 mm <sup>2</sup>	5 - 16 mm	27 mm
IFBS24	553592	24 mm	2 - 10 mm	Flexibar, IBSB Advanced 100 mm <sup>2</sup>	5 - 16 mm	31 mm
IFBS32	553593	32 mm	2 - 10 mm	Flexibar, IBSB Advanced 120, 185, 240 mm <sup>2</sup>	5 - 16 mm	39 mm
IFBS63	553596	63 mm	2 - 10 mm	Flexibar	5 - 16 mm	70 mm
IFBS50	553595	50 mm	2 - 10 mm	Flexibar	5 - 16 mm	57 mm
IFBS40	553594	40 mm	2 - 10 mm	Flexibar	5 - 16 mm	47 mm

Table 2/3

Catalog Number	Article Number	C	D	Height (H)	Length (L)	Width (W)
IFBS20	553591	20 mm	36 mm	30 mm	40mm	15 mm
IFBS24	553592	20 mm	40 mm	30 mm	40mm	15 mm
IFBS32	553593	20 mm	48 mm	30 mm	40mm	15 mm
IFBS63	553596	20 mm	96 mm	30 mm	40mm	15 mm
IFBS50	553595	20 mm	83 mm	30 mm	40mm	15 mm
IFBS40	553594	20 mm	73 mm	30 mm	40mm	15 mm

Table 3/3

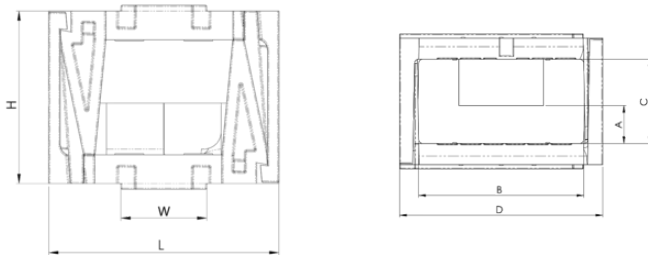
Catalog Number	Article Number	Unit Weight
IFBS20	553591	0.058 kg
IFBS24	553592	0.059 kg
IFBS32	553593	0.063 kg
IFBS63	553596	0.118 kg
IFBS50	553595	0.108 kg
IFBS40	553594	0.103 kg

## ADDITIONAL PRODUCT DETAILS

Recommended distance between support blocks is 400mm (15 3/4")

The nVent ERIFLEX IFBS Support Kit can only be used with nVent ERIFLEX Flexibar and IBSB braided conductors. Compatibility with other solutions has not been tested.

## DIAGRAMS



## WARNING

nVent products shall be installed and used only as indicated in nVent's product instruction sheets and training materials. Instruction sheets are available at [www.nvent.com](http://www.nvent.com) and from your nVent customer service representative. Improper installation, misuse, misapplication or other failure to completely follow nVent's instructions and warnings may cause product malfunction, property damage, serious bodily injury and death and/or void your warranty.

#### North America

+1.800.753.9221

Option 1 – Customer Care

Option 2 – Technical

Support

#### Europe

Netherlands:

+31 800-0200135

France:

+33 800 901 793

#### Europe

Germany:

800 1890272

Other Countries:

+31 13 5835404

#### APAC

Shanghai:

+ 86 21 2412 1618/19

Sydney:

+61 2 9751 8500



Our powerful portfolio of brands:

**CADDY**

**ERICO**

**HOFFMAN**

**ILSCO**

**SCHROFF**

**TRACHTE**