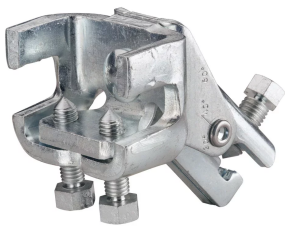


Steel Flange Adapter Assembly

Data Solutions



CERTIFICATIONS



FEATURES

Steel Flange Adapter and Universal Structural Bracket are preassembled, limiting work required in the field

Installs on top or bottom flange of I-beams or bar joists

Low profile easily fits between metal deck and steel structure

Thumb spring retainer allows for ease of positioning

Integrated angle gauge easily displays brace member angle of installation

Snap-off bolt head helps enable easy installation and inspection of seismic sway braces

Works with 1" through 2" brace pipes to reduce inventory

Meets NFPA® 13 as pre-qualified for seismic applications

FM Approved with the following brace members: 1-2 in Sch40 Pipe

FM Specification Tested with the following brace members: 1-2 in Sch40 Pipe

SPECIFICATIONS

Table 1/2

Catalog Number	Article Number	Material	Finish	Flange Thickness (FT)	Height (H)	Width (W)
CSBS1A	404505	Steel	Electrogalvanized	6 – 19mm	67mm	92mm

Table 2/2

Catalog Number	Article Number	Angle (a)	A	B	C	D
CSBS1A	404505	45°	105mm	33mm	65mm	23mm

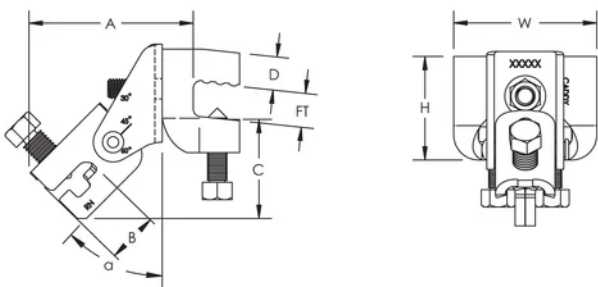
UL Loads

Part Number	Flange Thickness	Brace Member	Load Rating
CSBS1A	6 - 8 mm	DN25 - DN50 Sch. 40 NPS	6672 N
	8 - 19 mm		7561 N

FM Loads

Part Number	Horizontal Capacity per Installation Angle from Vertical							
	Perpendicular to Structure				Parallel to Structure			
	30°- 44°	45°- 59°	60°- 74°	75°- 90°	30°- 44°	45°- 59°	60°- 74°	75°- 90°
CSBS1A	3780 N	7910 N	12320 N	12630 N	3910 N	6360 N	8980 N	10720 N

DIAGRAMS



WARNING

nVent products shall be installed and used only as indicated in nVent's product instruction sheets and training materials. Instruction sheets are available at www.nvent.com and from your nVent customer service representative. Improper installation, misuse, misapplication or other failure to completely follow nVent's instructions and warnings may cause product malfunction, property damage, serious bodily injury and death and/or void your warranty.



Our powerful portfolio of brands:

CADDY ERICO HOFFMAN ILSCO SCHROFF TRACHTE