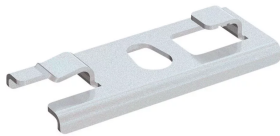


PEMSA Wire Basket Tray Quick Center Support

Data Solutions



CERTIFICATIONS



FEATURES

Ideal for tray widths up to 200mm

Side load access for cable installation

IEC 61537 load rating and earthing compliant

SPECIFICATIONS

Finish: Electrogalvanized

Material: Steel

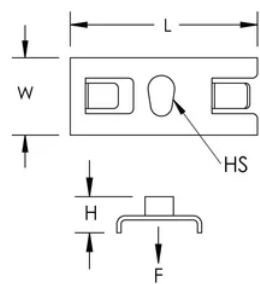
Table 1/2

Catalog Number	Article Number	Color	Length (L)	Width (W)	Height (H)	Hole Size (HS)
WBTQCTRSPT M10	820425		59mm	35mm	5mm	8 – 10mm

CatalogNumber	Article Number	Color	Length (L)	Width (W)	Height (H)	Hole Size (HS)
WBTQCTRSPRT M6	820405		59mm	35mm	5mm	6mm
WBTQCTRSPRT M6BG	820406	Black	59mm	35mm	5mm	6mm

Table 2/2			
Catalog Number	Article Number	Static Load	Certifications
WBTQCTRSPRTM10	820425	833N	ANOR EU WTB Q, CE, CADDY EU WBT QC
WBTQCTRSPRTM6	820405	833N	CE, CADDY EU WBT QC
WBTQCTRSPRTM6BG	820406	833N	CE, CADDY EU WBT QC, ANOR EU WTB Q

DIAGRAMS



WARNING

nVent products shall be installed and used only as indicated in nVent's product instruction sheets and training materials. Instruction sheets are available at www.nvent.com and from your nVent customer service representative. Improper installation, misuse, misapplication or other failure to completely follow nVent's instructions and warnings may cause product malfunction, property damage, serious bodily injury and death and/or void your warranty.



Our powerful portfolio of brands:

CADDY ERICO HOFFMAN ILSCO SCHROFF TRACHTE