

# nVent CADDY Speed Link SLK with Drop Wire Clip



## FEATURES

Complete system includes wire, locking device and pre-assembled drop wire clip end fitting for catenary cable

Can be used to hang services from catenary cable or act as an intermediate support to reduce sag and tension

Easily snaps onto catenary cable and locks in place when closed

Tool-free clip can be hand-closed on the catenary wire

## SPECIFICATIONS

**Static Load Safety Factor:** 5:1

**Finish:** Electrogalvanized;nVent CADDY Armour

**Material:** Steel;Spring Steel;Polypropylene;Zinc Alloy

Table 1/3

Catalog Number	Article Number	Wire Rope Diameter	Wire Rope Length	A	B	C
SLK15L1DW6	196830	1.5 mm	1m	70 mm	20 mm	25 mm
SLK15L2DW6	196831	1.5 mm	2m	70 mm	20 mm	25 mm
SLK15L3DW6	196832	1.5 mm	3m	70 mm	20 mm	25 mm
SLK15L5DW6	196833	1.5 mm	5m	70 mm	20 mm	25 mm

CatalogNumber	Article Number	Wire Rope Diameter	Wire Rope Length	A	B	C
SLK2L1DW6	196836	2 mm	1m	70 mm	20 mm	25 mm
SLK2L2DW6	196837	2 mm	2m	70 mm	20 mm	25 mm
SLK2L3DW6	196838	2 mm	3m	70 mm	20 mm	25 mm
SLK2L5DW6	196839	2 mm	5m	70 mm	20 mm	25 mm
SLK3L1DW6	196842	3 mm	1m	70 mm	20 mm	25 mm
SLK3L2DW6	196843	3 mm	2m	70 mm	20 mm	25 mm
SLK3L3DW6	196844	3 mm	3m	70 mm	20 mm	25 mm
SLK3L5DW6	196845	3 mm	5m	70 mm	20 mm	25 mm

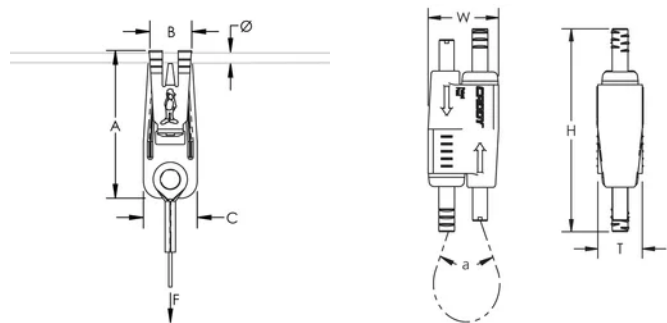
Table 2/3					
Catalog Number	Article Number	Diameter (Ø)	Height (H)	Width (W)	Thickness (T)
SLK15L1DW6	196830	6 mm	55 mm	19 mm	12.5 mm
SLK15L2DW6	196831	6 mm	55 mm	19 mm	12.5 mm
SLK15L3DW6	196832	6 mm	55 mm	19 mm	12.5 mm
SLK15L5DW6	196833	6 mm	55 mm	19 mm	12.5 mm
SLK2L1DW6	196836	6 mm	55 mm	19 mm	12.5 mm
SLK2L2DW6	196837	6 mm	55 mm	19 mm	12.5 mm
SLK2L3DW6	196838	6 mm	55 mm	19 mm	12.5 mm
SLK2L5DW6	196839	6 mm	55 mm	19 mm	12.5 mm
SLK3L1DW6	196842	6 mm	62 mm	24 mm	16 mm

Catalog Number	Article Number	Diameter (Ø)	Height (H)	Width (W)	Thickness (T)
SLK3L2DW6	196843	6 mm	62 mm	24 mm	16 mm
SLK3L3DW6	196844	6 mm	62 mm	24 mm	16 mm
SLK3L5DW6	196845	6 mm	62 mm	24 mm	16 mm

Table 3/3

Catalog Number	Article Number	Angle (a)	Static Load
SLK15L1DW6	196830	90 ° Max	195N
SLK15L2DW6	196831	90 ° Max	195N
SLK15L3DW6	196832	90 ° Max	195N
SLK15L5DW6	196833	90 ° Max	195N
SLK2L1DW6	196836	90 ° Max	440N
SLK2L2DW6	196837	90 ° Max	440N
SLK2L3DW6	196838	90 ° Max	440N
SLK2L5DW6	196839	90 ° Max	440N
SLK3L1DW6	196842	90 ° Max	700N
SLK3L2DW6	196843	90 ° Max	700N
SLK3L3DW6	196844	90 ° Max	700N
SLK3L5DW6	196845	90 ° Max	700N

DIAGRAMS



WARNING

nVent products shall be installed and used only as indicated in nVent's product instruction sheets and training materials. Instruction sheets are available at [www.nvent.com](http://www.nvent.com) and from your nVent customer service representative. Improper installation, misuse, misapplication or other failure to completely follow nVent's instructions and warnings may cause product malfunction, property damage, serious bodily injury and death and/or void your warranty.

North America

+1.800.753.9221  
Option 1 – Customer Care  
Option 2 – Technical  
Support

Europe

Netherlands:  
+31 800-0200135  
France:  
+33 800 901 793

Europe

Germany:  
800 1890272  
Other Countries:  
+31 13 5835404

APAC

Shanghai:  
+ 86 21 2412 1618/19  
Sydney:  
+61 2 9751 8500



Our powerful portfolio of brands:

CADDY   ERICO   HOFFMAN   ILSCO   SCHROFF   TRACHTE

