

# CTRI Cantilever Arm for Cable Tray



## CERTIFICATIONS



## FEATURES

Cable tray type

Welded on flat mounting plate

## SPECIFICATIONS

**Finish:** Hot-Dip Galvanized

**Material:** Steel

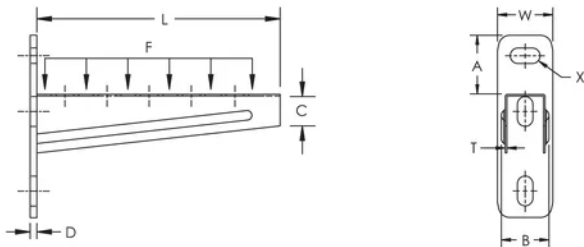
Table 1/1

Catalog Number	Article Number	Length (L)	Width (W)	Static Load
CTRI120HD	311920	120mm	50 mm	1500N
CTRI160HD	311925	170mm	50 mm	1250N
CTRI210HD	311930	220mm	50 mm	1125N

Catalog Number	Article Number	Length (L)	Width (W)	Static Load
CTRI260HD	311935	270mm	50 mm	875N
CTRI310HD	311940	320mm	50 mm	750N
CTRI410HD	311945	420mm	50 mm	750N
CTRI510HD	311950	520mm	50 mm	750N
CTRI810HD	311955	620mm	50 mm	625N

**Thickness (T):** 1.5 mm  
**D:** 6 mm  
**X:** 14 x 27 mm  
**C:** 30 mm  
**B:** 43 mm  
**A:** 53.5 mm

## DIAGRAMS



## WARNING

nVent products shall be installed and used only as indicated in nVent's product instruction sheets and training materials. Instruction sheets are available at [www.nvent.com](http://www.nvent.com) and from your nVent customer service representative. Improper installation, misuse, misapplication or other failure to completely follow nVent's instructions and warnings may cause product malfunction, property damage, serious bodily injury and death and/or void your warranty.

#### North America

+1.800.753.9221

Option 1 – Customer Care

Option 2 – Technical

Support

#### Europe

Netherlands:

+31 800-0200135

France:

+33 800 901 793

#### Europe

Germany:

800 1890272

Other Countries:

+31 13 5835404

#### APAC

Shanghai:

+ 86 21 2412 1618/19

Sydney:

+61 2 9751 8500



Our powerful portfolio of brands:

**CADDY**

**ERICO**

**HOFFMAN**

**ILSCO**

**SCHROFF**

**TRACHTE**

