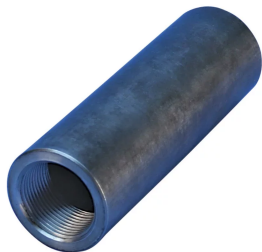


P14 Position Coupler, Female Only, Worldwide Design



Used in segmental pour and closure pour applications. Male and female components are sold separately.

FEATURES

Designed to splice two curved, bent or straight bars, when neither bar can be rotated and where the ongoing bar is free to move in its axial direction

SPECIFICATIONS

Finish: Plain
Coupler Adjustment: Standard
Material: Steel

Table 1/2

Catalog Number	Rebar Size, Metric	Rebar Size, US	Rebar Size, Canada	Diameter (Ø)	Coupler Body (CB)	Bar Depth (BD)
EL12P14LFN	12 mm	#4	10M	25 mm	46mm	19mm
EL10P14LFN	10 mm	#3		25 mm	42mm	18mm
EL14P14LFN	14 mm			25 mm	51mm	21mm
EL16P14LFN	16 mm	#5	15M	30 mm	54mm	24mm
EL18P14LFN	18 mm			35 mm	61mm	29mm

CatalogNumber	Rebar Size, Metric	Rebar Size, US	Rebar Size, Canada	Diameter (Ø)	Coupler Body (CB)	Bar Depth (BD)
EL20P14LFN	20 mm	#6	20M	35 mm	76mm	35mm
EL22P14LFN	22 mm	#7		40 mm	80mm	37mm
EL25P14LFN	25 mm	#8	25M	45 mm	86mm	40mm
EL28P14LFN	28 mm	#9	30M	50 mm	90mm	42mm
EL32P14LFN	32 mm		10M	60 mm	96mm	45mm
EL36P14LFN	36 mm	#11	35M	65 mm	105mm	52mm
EL40P14LFN	40 mm			70 mm	112mm	57mm

Table 2/2

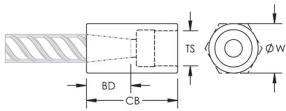
Catalog Number	Thread Size (TS)	Unit Weight	Package Quantity
EL12P14LFN	M18	0.12 kg	120
EL10P14LFN	M18	0.12 kg	120
EL14P14LFN	M18	0.13 kg	120
EL16P14LFN	M22	0.2 kg	80
EL18P14LFN	M24	0.32 kg	50
EL20P14LFN	M26	0.36 kg	40
EL22P14LFN	M31	0.49 kg	36
EL25P14LFN	M34	0.67 kg	26
EL28P14LFN	M37	0.87 kg	20
EL32P14LFN	M42	1.41 kg	12

Catalog Number	Thread Size (TS)	Unit Weight	Package Quantity
EL36P14LFN	M46	1.77 kg	10
EL40P14LFN	M53	2.07 kg	8

ADDITIONAL PRODUCT DETAILS

Bar dimensions and weights listed may vary by region. Coupler sizes not shown may be available by special order. Contact your nVent LENTON representative for more information.

DIAGRAMS



WARNING

nVent products shall be installed and used only as indicated in nVent's product instruction sheets and training materials. Instruction sheets are available at www.nvent.com and from your nVent customer service representative. Improper installation, misuse, misapplication or other failure to completely follow nVent's instructions and warnings may cause product malfunction, property damage, serious bodily injury and death and/or void your warranty.

North America

+1.800.753.9221
Option 1 – Customer Care
Option 2 – Technical
Support

Europe

Netherlands:
+31 800-0200135
France:
+33 800 901 793

Europe

Germany:
800 1890272
Other Countries:
+31 13 5835404

APAC

Shanghai:
+ 86 21 2412 1618/19
Sydney:
+61 2 9751 8500



Our powerful portfolio of brands:

CADDY ERICO HOFFMAN ILSCO SCHROFF TRACHTE