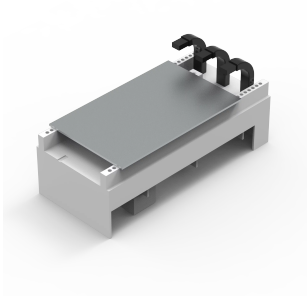


Busbar Adapter 160A, W060



Busbar adapters adapted to the component manufacturers' design.

FEATURES

Description: 3-pole busbar adapter 160 A, adapted to the component manufacturer's design.

Rated voltage: 690 V

For busbars: 12, 15, 20, 25, 30 × 5, 10

Power dissipation at 80% load: 7.7 W

Pack quantity: 1 pc.

SPECIFICATIONS

Table 1/1

| Catalog Number | Height | Width | Depth | Material | Finish | Color |
|----------------|--------|-------|-------|---------------------|--------|-------------------|
| 32575 | 200mm | 90mm | 69mm | Plastic, Mild Steel | Plated | Black, Light Gray |
| 32660 | 200mm | 76mm | 69mm | Plastic, Mild Steel | Plated | Black, Light Gray |

WARNING

nVent products shall be installed and used only as indicated in nVent's product instruction sheets and training materials. Instruction sheets are available at www.nvent.com and from your nVent customer service representative. Improper installation, misuse, misapplication or other failure to completely follow nVent's instructions and warnings may cause product malfunction, property damage, serious bodily injury and death and/or void your warranty.



Our powerful portfolio of brands:

CADDY ERICO HOFFMAN ILSCO SCHROFF TRACHTE