

SNSW Flanged Nut



FEATURES

Ideal for retrofit projects, such as trapeze installations, where disassembly of the support system is not desired

Use as a stopper when installing nVent CADDY Rod Lock assemblies

Can be easily installed, removed, and repositioned at any location along the threaded rod

Ready to use out of the box and eliminates multiple pieces of standard hardware

Functions as a hex nut and flat washer combined

Washer is wide enough to work with standard strut channel profiles

SPECIFICATIONS

Table 1/2

Catalog Number	Article Number	Material	Finish	Static Load Safety Factor	Rod Size (RS)	Diameter (Ø)
SNSWM10	390102	Steel	Electrogalvanized	3:1	10	42.4 mm

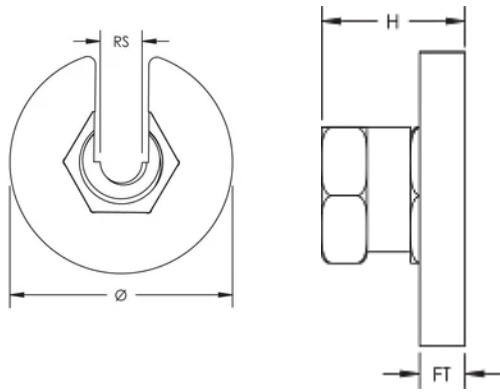
Table 2/2

Catalog Number	Article Number	Height (H)	Wrench Size	Flange Thickness (FT)	Static Load
SNSWM10	390102	20mm	20 mm	6.5 mm	1557N

ADDITIONAL PRODUCT DETAILS

For use on plain and electro zinc plated hardware only.

DIAGRAMS



WARNING

nVent products shall be installed and used only as indicated in nVent's product instruction sheets and training materials. Instruction sheets are available at www.nvent.com and from your nVent customer service representative. Improper installation, misuse, misapplication or other failure to completely follow nVent's instructions and warnings may cause product malfunction, property damage, serious bodily injury and death and/or void your warranty.

North America

+1.800.753.9221
Option 1 – Customer Care
Option 2 – Technical
Support

Europe

Netherlands:
+31 800-0200135
France:
+33 800 901 793

Europe

Germany:
800 1890272
Other Countries:
+31 13 5835404

APAC

Shanghai:
+ 86 21 2412 1618/19
Sydney:
+61 2 9751 8500



Our powerful portfolio of brands:

CADDY ERICO HOFFMAN ILSCO SCHROFF TRACHTE

