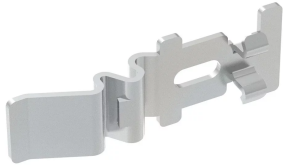


PEMSA Wire Basket Tray Quick Coupler



CERTIFICATIONS



FEATURES

Easy to use, quick connect feature

No additional hardware

Works with wide range of tray sizes and configurations

IEC 61537 load rating and earthing compliant

SPECIFICATIONS

Finish: Electrogalvanized

Material: Steel

Table 1/2

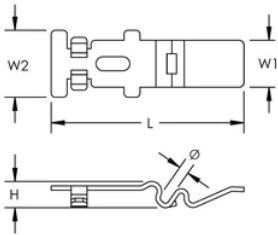
Catalog Number	Article Number	Color	Length (L)	Width 1 (W1)	Width 2 (W2)	Height (H)
WBTQSPL45EG	820720		97mm	23.5 mm	33.5 mm	13 mm
WBTQSPL45BG	820721	Black	97mm	23.5 mm	33.5 mm	13 mm

CatalogNumber	Article Number	Color	Length (L)	Width 1 (W1)	Width 2 (W2)	Height (H)
WBTQSPL5BG	820723	Black	97mm	23.5 mm	33.5 mm	13 mm
WBTQSPL5EG	820722		97mm	23.5 mm	33.5 mm	13 mm

Table 2/2

Catalog Number	Article Number	Diameter (Ø)
WBTQSPL45EG	820720	4.0 - 4.5 mm
WBTQSPL45BG	820721	4.0 - 4.5 mm
WBTQSPL5BG	820723	5 mm
WBTQSPL5EG	820722	5 mm

DIAGRAMS



WARNING

nVent products shall be installed and used only as indicated in nVent's product instruction sheets and training materials. Instruction sheets are available at www.nvent.com and from your nVent customer service representative. Improper installation, misuse, misapplication or other failure to completely follow nVent's instructions and warnings may cause product malfunction, property damage, serious bodily injury and death and/or void your warranty.

North America

+1.800.753.9221

Option 1 – Customer Care

Option 2 – Technical

Support

Europe

Netherlands:

+31 800-0200135

France:

+33 800 901 793

Europe

Germany:

800 1890272

Other Countries:

+31 13 5835404

APAC

Shanghai:

+ 86 21 2412 1618/19

Sydney:

+61 2 9751 8500



Our powerful portfolio of brands:

CADDY

ERICO

HOFFMAN

ILSCO

SCHROFF

TRACHTE

