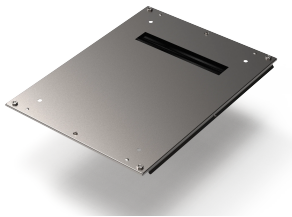


Varistar CP Seismic Base Plate, EMC, with Cable Entry, One-Piece

Varistar CP Base Plate for Rear Cable Ducting, plain for IP 55 or EMC applications.



FEATURES

Installation from outside

Cutout at rear

60 mm deep

Cable ducting with IP 55 / EMC gasket

SPECIFICATIONS

Product Type: Cabinet/Rack Base

Finish: Hot-Dip Galvanized

Material: Steel

Table 1/2

| Catalog Number | Width | Depth | Package Quantity | Complies With | Type | Works With |
|----------------|-------|--------|------------------|---|----------------------------|-------------|
| 20630-317 | 600mm | 600mm | 1 | IEC 61587-1, IEC 61587-2, IEC 61587-3 | Base Plate, Cable Entry | Varistar CP |
| 20630-318 | 600mm | 800mm | 1 | IEC 61587-1, IEC 61587-2, IEC 61587-3 | Base Plate, Cable Entry | Varistar CP |
| 20630-319 | 600mm | 1000mm | 1 | IEC 61587-1, IEC 61587-2, IEC 61587-3 | Base Plate, Cable Entry | Varistar CP |

| CatalogNumber | Width | Depth | Package Quantity | Complies With | Type | Works With |
|---------------|--------|--------|------------------|---|----------------------------|-------------|
| 20630-320 | 600mm | 1200mm | 1 | IEC 61587-1, IEC 61587-2, IEC 61587-3 | Base Plate, Cable Entry | Varistar CP |
| 20630-321 | 600mm | 600mm | 1 | IEC 61587-1, IEC 61587-2, IEC 61587-3 | Base Plate, Cable Entry | Varistar CP |
| 20630-322 | 800mm | 800mm | 1 | IEC 61587-1, IEC 61587-2, IEC 61587-3 | Base Plate, Cable Entry | Varistar CP |
| 20630-323 | 1000mm | 1000mm | 1 | IEC 61587-1, IEC 61587-2, IEC 61587-3 | Base Plate, Cable Entry | Varistar CP |
| 20630-324 | 800mm | 1200mm | 1 | IEC 61587-1, IEC 61587-2, IEC 61587-3 | Base Plate, Cable Entry | Varistar CP |

Table 2/2

| Catalog Number | Quick Ship |
|----------------|------------|
| 20630-317 | No |
| 20630-318 | No |
| 20630-319 | No |
| 20630-320 | No |
| 20630-321 | No |
| 20630-322 | No |
| 20630-323 | No |
| 20630-324 | No |

ADDITIONAL PRODUCT DETAILS

Varistar CP Base Plate for Rear Cable Ducting, plain for IP 55 or EMC applications.

Please purchase the grounding kit separately.

WARNING

nVent products shall be installed and used only as indicated in nVent's product instruction sheets and training materials. Instruction sheets are available at www.nvent.com and from your nVent customer service representative. Improper installation, misuse, misapplication or other failure to completely follow nVent's instructions and warnings may cause product malfunction, property damage, serious bodily injury and death and/or void your warranty.

North America

All locations
+1.763.422.2661
Chat with us:
nvent.com/schroff

Europe

Straubenhardt, Germany
+49.7082.794.0
Betschdorf, France
+33.3.88.90.64.90
Warsaw, Poland
+48.22.209.98.35
Assago, Italy
+39.02.932.7141
Chat with us:
nvent.com/schroff

Asia

Shanghai, China
+86.21.2412.6943
Qingdao, China
+86.532.8771.6101
Singapore
+65.6768.5800
Shin-Yokohama, Japan
+81.45.476.0271
Chat with us:
nvent.com/schroff

Middle East & India

Dubai, United Arab Emirates
+971.4.378.1700
Bangalore, India
+91.80.6715.2001
Istanbul, Turkey
+90.216.250.7374
Chat with us:
nvent.com/schroff



Our powerful portfolio of brands:

CADDY ERICO HOFFMAN ILSCO SCHROFF TRACHTE