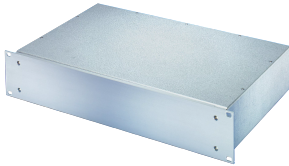


MultipacPRO 19" Chassis, Steel, AlZn, Plain Top and Base



This 19" chassis is a form of subrack which accepts horizontal board mounting or the mounting of non-standard components like transformers or other heavy load accessories typically mounted on a chassis plate. This version is produced from sheet metal, Al-Zn coated and have plain top and bottom covers.

CERTIFICATIONS



FEATURES

Steel (AlZn coated) with Al extrusion front panel

Detachable front and rear panel for easy machining

IP 20, in accordance with IEC 60529

Supplied as space-saving flat-pack

EMC shielding: Approx. 20dB(A) at 2GHz without shielding material. >40dB(A) at 1Ghz with addition of stainless steel gasket between front panel and case body

Internal and external dimensions in accordance with: IEC 60297-3-101

EMC shielding: Approx. 20dB(A) at 2 GHz without shielding material. >40dB(A) at 1 GHz with addition of stainless steel gasket between front panel and case body

SPECIFICATIONS

Finish:	Aluminum-Zinc Plated
Product Family:	MultipacPRO
EMC Shielding:	No (Retrofittable)
Type:	Solid

Material: Steel
Product Type: Subrack/Chassis

Table 1/1

Catalog Number	Rack Height	Depth	Usable Width	Mounting	Complies With	Quick Ship
20860-120	1U	220mm	447mm	Rack	IEC 60297-3-100, IEC 60297-3-105	No
20860-121	1U	280mm	447mm	Rack	IEC 60297-3-100, IEC 60297-3-105	No
20860-122	1U	340mm	447mm	Rack	IEC 60297-3-100, IEC 60297-3-105	No
20860-126	2U	280mm	447mm	Rack	IEC 60297-3-100	No
20860-127	2U	340mm	447mm	Rack	IEC 60297-3-100	No

ADDITIONAL PRODUCT DETAILS

Please order front handles separately.

Telescopic slides cannot be used.

Further versions with steel front panel (pizza box) available on request.

Standardised internal mounting kits cannot be used.

WARNING

nVent products shall be installed and used only as indicated in nVent's product instruction sheets and training materials. Instruction sheets are available at www.nvent.com and from your nVent customer service representative. Improper installation, misuse, misapplication or other failure to completely follow nVent's instructions and warnings may cause product malfunction, property damage, serious bodily injury and death and/or void your warranty.

North America

All locations
+1.763.422.2661
Chat with us:
nvent.com/schroff

Europe

Straubenhardt, Germany
+49.7082.794.0
Betschdorf, France
+33.3.88.90.64.90
Warsaw, Poland
+48.22.209.98.35
Assago, Italy
+39.02.932.7141
Chat with us:
nvent.com/schroff

Asia

Shanghai, China
+86.21.2412.6943
Qingdao, China
+86.532.8771.6101
Singapore
+65.6768.5800
Shin-Yokohama, Japan
+81.45.476.0271
Chat with us:
nvent.com/schroff

Middle East & India

Dubai, United Arab Emirates
+971.4.378.1700
Bangalore, India
+91.80.6715.2001
Istanbul, Turkey
+90.216.250.7374
Chat with us:
nvent.com/schroff



Our powerful portfolio of brands:

CADDY ERICO HOFFMAN ILSCO SCHROFF TRACHTE