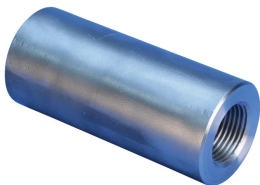


S13 Metric Parallel Bolt Coupler, Stainless Steel, WW Design, 32 mm, #10, 70 mm, M39 Thread

CATALOG NUMBER

EL32S13SSN



Stainless steel couplers are specified whenever corrosive environmental conditions combine with the need for high load-bearing strength. nVent LENTON stainless steel couplers are commonly used when the construction materials may come into contact with de-icing salts, salt water or marine environments. Typical applications include bridges and bridge decks.

FEATURES

Provides continuity between reinforcing bar and ISO® 965 metric all-thread rod or bolts

May be used to anchor load-bearing equipment to foundations, columns or walls

Machined from non-weldable grades of material, but can be tack welded

PRODUCT ATTRIBUTES

Material: Stainless Steel Duplex 2205 (EN 1.4462)

Finish: Plain

Design Version: Worldwide (Globally Available Materials)

Rebar Size, Metric: 32 mm

Rebar Size, US: #10

Diameter (Ø): 55 mm

Length (L): 125mm

A: 70 mm

Bar Depth (BD): 45mm

Thread Size (TS): M39

Thread Depth (TD): 43mm

Unit Weight: 1.46 kg

Designed to Meet: AASHTO;ABNT NBR 8548:1984;ACI 318 Type 1 (125% Specified Yield);ACI 318 Type 2 (Specified Tensile);ACI 349;ACI 359;AS3600

Package Quantity: 10

ADDITIONAL PRODUCT DETAILS

Bar dimensions and weights listed may vary by region. Coupler sizes not shown may be available by special order. Contact your nVent LENTON representative for more information.

Coupler supplied without bolt.

Bolt may be replaced by threaded rod of same class/grade.

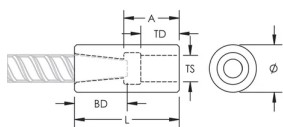
All calculations based on a minimum bolt engagement equal to Thread Depth (TD).

System Capacity based on bolt to coupler connection. For rebar to coupler connection, refer to applicable building codes and approvals or contact your nVent LENTON representative.

Suffix "EE" has been added to some part numbers to clarify design version among regions.

Bolt-to-Coupler Capacity (kN)					
Part Number	Grade 4.8	Grade 5.8	Grade 8.8	Grade 10.9	Grade 12.9
EL12S13SSN	62.7	78.3	109.8	109.8	109.8
EL16S13SSN	97.9	122.4	162.9	162.9	162.9
EL20S13SSN	141	176.3	282	332.3	332.3
EL25S13SSN	224.2	280.3	448.5	560.5	560.5
EL32S13ASSN	448.4	560.5	896.7	1120.9	1197.1
EL32S13SSN	390.3	487.9	780.6	783.8	783.8

DIAGRAMS



WARNING

nVent products shall be installed and used only as indicated in nVent's product instruction sheets and training materials. Instruction sheets are available at www.nvent.com and from your nVent customer service representative. Improper installation, misuse, misapplication or other failure to completely follow nVent's instructions and warnings may cause product malfunction, property damage, serious bodily injury and death and/or void your warranty.

North America

+1.800.753.9221

Option 1 – Customer Care

Option 2 – Technical

Support

Europe

Netherlands:

+31 800-0200135

France:

+33 800 901 793

Europe

Germany:

800 1890272

Other Countries:

+31 13 5835404

APAC

Shanghai:

+ 86 21 2412 1618/19

Sydney:

+61 2 9751 8500



Our powerful portfolio of brands:

CADDY

ERICO

HOFFMAN

ILSCO

SCHROFF

TRACHTE