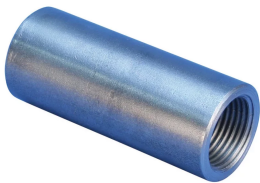


# A12 Standard Coupler for Cryogenic Applications, 20 mm, #6, 20M

## CATALOG NUMBER

**EL20A12CRN**



The nVent LENTON brand of cryogenic reinforcement splicing systems should be specified whenever cryogenic-grade reinforcing bar is used, or during normal operating or emergency conditions where the temperature falls below -20 °C (-4 °F). By combining the nVent LENTON taper-threaded couplers with state-of-the-art materials, we have developed one of the slimmest couplers on the market, while still maintaining top performance. Typical construction projects include LNG and LPG storage tanks.

## FEATURES

Designed to splice the same diameter bars where the second bar can be rotated and is not restricted in its axial direction

Slim design maintains concrete cover

Installs quickly and easily

Improved performance and reliability at cryogenic temperatures (-168 °C / -270 °F)

## PRODUCT ATTRIBUTES

Material: Stainless Steel 431 (EN 1.4057)

Finish: Plain

Rebar Size, Metric: 20 mm

Rebar Size, US: #6

Rebar Size, Canada: 20M

Diameter (Ø): 30 mm

Length (L): 87mm

Bar Depth (BD): 35mm

Bar Gap (BG): 17mm

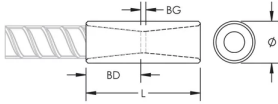
Unit Weight: 0.32 kg

Designed to Meet: ACI 318 Type 1 (125% Specified Yield); ACI 318 Type 2 (Specified Tensile); AS3600; BS EN 1992-1-1; DIN EN 1992-1-1; EN 14620-3; Eurocode 2

## ADDITIONAL PRODUCT DETAILS

Bar dimensions and weights listed may vary by region. Coupler sizes not shown may be available by special order. Contact your nVent LENTON representative for more information.

## DIAGRAMS



## WARNING

nVent products shall be installed and used only as indicated in nVent's product instruction sheets and training materials. Instruction sheets are available at [www.nvent.com](http://www.nvent.com) and from your nVent customer service representative. Improper installation, misuse, misapplication or other failure to completely follow nVent's instructions and warnings may cause product malfunction, property damage, serious bodily injury and death and/or void your warranty.

### North America

+1.800.753.9221

Option 1 – Customer Care

Option 2 – Technical

Support

### Europe

Netherlands:

+31 800-0200135

France:

+33 800 901 793

### Europe

Germany:

800 1890272

Other Countries:

+31 13 5835404

### APAC

Shanghai:

+ 86 21 2412 1618/19

Sydney:

+61 2 9751 8500



Our powerful portfolio of brands:

**CADDY**

**ERICO**

**HOFFMAN**

**ILSCO**

**SCHROFF**

**TRACHTE**