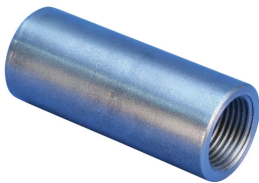


A32K Standard Coupler, Ultra High Strength, Corrosion Resistant, Plain, 12 mm, #4, 10M

CATALOG NUMBER

EL12A32K



The A32K family of standard couplers is designed for use on ChromX® 2000, 4000 and 9000 Series reinforcing steels. The couplers are produced from ChromX 9000 Series steel which is manufactured to the ASTM A1035 specification. The ChromX 9000 material specification provides for a ductile, high strength coupler that has improved corrosion resistance.

FEATURES

Designed to splice the same diameter bars where one bar can be rotated and the bar is not restricted in its axial direction

Slim design reduces concrete cover

Installs quickly and easily

ChromX® 9000 material specifications provide for a unique combination of strength and corrosion resistance

PRODUCT ATTRIBUTES

Material: ASTM A1035 Steel

Finish: Plain

100% U.S. Domestic Content: Yes

Rebar Size, Metric: 12 mm

Rebar Size, US: #4

Rebar Size, Canada: 10M

Diameter (Ø): 25 mm

Length (L): 50mm

Bar Depth (BD): 19mm

Bar Gap (BG): 12mm

Unit Weight: 0.16 kg

Designed to Meet: AASHTO;ABNT NBR 8548:1984;ACI 318 Type 1 (125% Specified Yield);ACI 318 Type 2 (Specified Tensile);ACI 349;ACI 359;AS3600

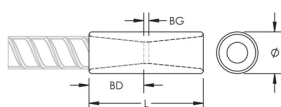
Package Quantity: 100

ADDITIONAL PRODUCT DETAILS

Bar dimensions and weights listed may vary by region. Coupler sizes not shown may be available by special order. Contact your nVent LENTON representative for more information.

ChromX® is a registered trademark of MMFX® Steel Corporation.

DIAGRAMS



WARNING

nVent products shall be installed and used only as indicated in nVent's product instruction sheets and training materials. Instruction sheets are available at www.nvent.com and from your nVent customer service representative. Improper installation, misuse, misapplication or other failure to completely follow nVent's instructions and warnings may cause product malfunction, property damage, serious bodily injury and death and/or void your warranty.

North America

+1.800.753.9221

Option 1 – Customer Care

Option 2 – Technical

Support

Europe

Netherlands:

+31 800-0200135

France:

+33 800 901 793

Europe

Germany:

800 1890272

Other Countries:

+31 13 5835404

APAC

Shanghai:

+ 86 21 2412 1618/19

Sydney:

+61 2 9751 8500



Our powerful portfolio of brands:

CADDY

ERICO

HOFFMAN

ILSCO

SCHROFF

TRACHTE