

# CPP Tapered Plastic Screw-In Plug for A12, A22 and A32K



## FEATURES

Designed for use with the A12, A22 and A32K coupler families

Designed to keep dirt, water and concrete slurry out of the coupler during the concrete pour

Color coded for the appropriate coupler size

## SPECIFICATIONS

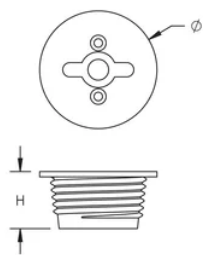
Table 1/2

Catalog Number	Article Number	Material	Rebar Size, Metric	Rebar Size, US	Rebar Size, Canada	Diameter (Ø)
EL36CPPB50	153180	High Density Polyethylene (HDPE)	36 mm	#11	35M	46 mm

Table 2/2

Catalog Number	Article Number	Height (H)	Color	Package Quantity
EL36CPPB50	153180	16 mm	Blue	50

DIAGRAMS



WARNING

nVent products shall be installed and used only as indicated in nVent's product instruction sheets and training materials. Instruction sheets are available at [www.nvent.com](http://www.nvent.com) and from your nVent customer service representative. Improper installation, misuse, misapplication or other failure to completely follow nVent's instructions and warnings may cause product malfunction, property damage, serious bodily injury and death and/or void your warranty.

North America

+1.800.753.9221  
Option 1 – Customer Care  
Option 2 – Technical  
Support

Europe

Netherlands:  
+31 800-0200135  
France:  
+33 800 901 793

Europe

Germany:  
800 1890272  
Other Countries:  
+31 13 5835404

APAC

Shanghai:  
+ 86 21 2412 1618/19  
Sydney:  
+61 2 9751 8500



Our powerful portfolio of brands:

CADDY   ERICO   HOFFMAN   ILSCO   SCHROFF   TRACHTE