

A2 Standard Coupler, Plain



CERTIFICATIONS



FEATURES

Designed to splice the same diameter bars where the second bar can be rotated and is not restricted in its axial direction

Slim design maintains concrete cover

Installs quickly and easily

SPECIFICATIONS

Finish:	Plain
Coupler Protector:	Standard
Material:	Steel

Table 1/2

Catalog Number	Rebar Size, Metric	Rebar Size, US	Rebar Size, Canada	Hex Width (W)	Diameter (Ø)	Length (L)
EL12A2N	12 mm	#4	10M	17 mm		42mm
EL10A2N	10 mm	#3		17 mm		48mm

CatalogNumber	Rebar Size, Metric	Rebar Size, US	Rebar Size, Canada	Hex Width (W)	Diameter (Ø)	Length (L)
EL16A2N	16 mm	#5	15M	22 mm		56mm
EL14A2N	14 mm			22 mm		50mm
EL18A2N	18 mm			27 mm		61mm
EL20A2N	20 mm	#6	20M	27 mm		72mm
EL22A2N	22 mm	#7			32 mm	81mm
EL25A2N	25 mm	#8	25M		36 mm	86mm
EL28A2N	28 mm	#9	30M		40 mm	92mm
EL30A2N	30 mm				45 mm	92mm
EL38A2N	38 mm	#12			53 mm	106mm
EL32A2N	32 mm	#10			45 mm	97mm
EL34A2N	34 mm				48 mm	97mm
EL40A2N	40 mm				55 mm	127mm
EL36A2N	36 mm	#11	35M		50 mm	102mm
EL57TA2N	57 mm	#18	55M		80 mm	168mm
EL43TA2N	43 mm	#14	45M		60 mm	137mm
EL50TA2N	50 mm				70 mm	167mm

Table 2/2

Catalog Number	Bar Depth (BD)	Bar Gap (BG)	Unit Weight	Package Quantity	Certifications
----------------	----------------	--------------	-------------	------------------	----------------

EL12A2N	15mm	12mm	0.06 kg	285	LA City Approval, CARES, IAPMO®-UES
EL10A2N	18mm	12mm	0.08 kg	285	
EL16A2N	22mm	12mm	0.12 kg	150	IAPMO®-UES, DCL, CARES, LA City Approval
EL14A2N	19mm	12mm	0.12 kg	150	
EL18A2N	24mm	13mm	0.21 kg	70	
EL20A2N	28mm	16mm	0.23 kg	70	DCL, IAPMO®-UES, LA City Approval, CARES
EL22A2N	32mm	17mm	0.35 kg	50	IAPMO®-UES, LA City Approval
EL25A2N	34mm	18mm	0.43 kg	50	DCL, CARES, LA City Approval, IAPMO®-UES
EL28A2N	38mm	16mm	0.58 kg	42	LA City Approval, IAPMO®-UES
EL30A2N	38mm	16mm	0.81 kg	20	
EL38A2N	44mm	18mm	1.14 kg	12	
EL32A2N	40mm	17mm	0.73 kg	16	CARES, LA City Approval, IAPMO®-UES, DCL
EL34A2N	40mm	17mm	0.92 kg	16	
EL40A2N	55mm	17mm	1.36 kg	12	LA City Approval, IAPMO®-UES
EL36A2N	43mm	16mm	0.99 kg	16	LA City Approval, IAPMO®-UES
EL57TA2N	71mm	26mm	4.14 kg	6	IAPMO®-UES, LA City Approval
EL43TA2N	56mm	25mm	1.92 kg	12	LA City Approval, IAPMO®-UES
EL50TA2N	71mm	25mm	3 kg	6	IAPMO®-UES, LA City Approval, DCL

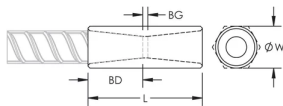
Designed to Meet:

AASHTO;ABNT NBR 8548:1984;ACI 318 Type 1 (125% Specified Yield);ACI 318 Type 2 (Specified Tensile);ACI 349;ACI 359;AS3600

ADDITIONAL PRODUCT DETAILS

Bar dimensions and weights listed may vary by region. Coupler sizes not shown may be available by special order. Contact your nVent LENTON representative for more information.

DIAGRAMS



WARNING

nVent products shall be installed and used only as indicated in nVent's product instruction sheets and training materials. Instruction sheets are available at www.nvent.com and from your nVent customer service representative. Improper installation, misuse, misapplication or other failure to completely follow nVent's instructions and warnings may cause product malfunction, property damage, serious bodily injury and death and/or void your warranty.

North America	Europe	Europe	APAC
+1.800.753.9221	Netherlands:	Germany:	Shanghai:
Option 1 – Customer Care	+31 800-0200135	800 1890272	+ 86 21 2412 1618/19
Option 2 – Technical	France:	Other Countries:	Sydney:
Support	+33 800 901 793	+31 13 5835404	+61 2 9751 8500



Our powerful portfolio of brands:

CADDY ERICO HOFFMAN ILSCO SCHROFF TRACHTE