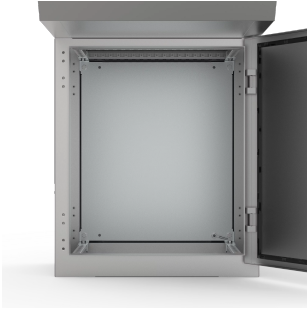


# Mounting Plate, CBPZ



The steel mounting plate contributes to speeding up the assembly of the enclosure, since it can be machined easily and equipped with components before being mounted.

## FEATURES

---

Description: Standard mounting plate for MPC(S) base section.

Material: 2 mm galvanized steel.

Pack quantity: 1 plate with mounting accessories.

SPECIFICATIONS

Material: Galvanized Steel  
Finish: Plated

Table 1/1						
Catalog Number	Height	Width	Fits Enclosure Width	Panel Size	Enclosure Material	Quick Ship
CBPZ06	590mm	600mm	600mm	590 x 499mm	Mild Steel, Stainless Steel	No
CBPZ08	590mm	800mm	800mm	590 x 699mm	Mild Steel, Stainless Steel	No
CBPZ10	590mm	1000mm	1000mm	590 x 899mm	Mild Steel, Stainless Steel	No
CBPZ12	590mm	1200mm	1200mm	590 x 1099mm	Mild Steel, Stainless Steel	No
CBPZ16	590mm	1600mm	1600mm	590 x 1499mm	Mild Steel, Stainless Steel	No

WARNING

nVent products shall be installed and used only as indicated in nVent's product instruction sheets and training materials. Instruction sheets are available at [www.nvent.com](http://www.nvent.com) and from your nVent customer service representative. Improper installation, misuse, misapplication or other failure to completely follow nVent's instructions and warnings may cause product malfunction, property damage, serious bodily injury and death and/or void your warranty.



Our powerful portfolio of brands:

CADDY   ERICO   HOFFMAN   ILSCO   SCHROFF   TRACHTE