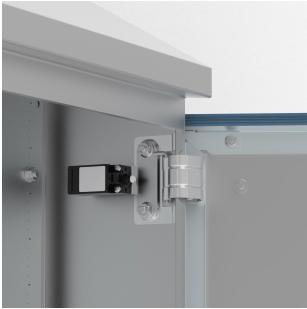


Door Switch For Hdw, HDSW



Door switch to activate any electrical device (lighting, signalling, alarms, etc.) designed for HDW wall mounted enclosures. Cable entry M20. No machining required.

INDUSTRY STANDARDS

cULus_UL

CE UKCA

FEATURES

Description: Door switch to activate any electrical device (lighting, signalling, alarms, etc.) designed for HDW range of wall mounted enclosures. No machining is required.

Switch capacity: 3 A / 240 V.

Approvals: CE, cULus listed.

Pack quantity: 1 piece with mounting instructions.

Additional information: Minimum enclosure depth 210 mm.

SPECIFICATIONS

Table 1/1						
Catalog Number	Height	Width	Depth	Enclosure Material	Product Family	Material
HDSW01	92mm	38mm	77mm	Stainless Steel	Wall Mounted	Plastic

WARNING

nVent products shall be installed and used only as indicated in nVent's product instruction sheets and training materials. Instruction sheets are available at www.nvent.com and from your nVent customer service representative. Improper installation, misuse, misapplication or other failure to completely follow nVent's instructions and warnings may cause product malfunction, property damage, serious bodily injury and death and/or void your warranty.



Our powerful portfolio of brands:

CADDY ERICO HOFFMAN ILSCO SCHROFF TRACHTE