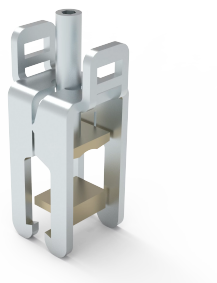


# Brace Terminals, WO60

Connection terminals for cables up to 300 mm<sup>2</sup>.



## FEATURES

Description: Brace terminal, up to 300mm<sup>2</sup>, for round conductors. Terminal with captive clamping screws, conductor can be overlapped. Indication of nominal cross-section and tightening torque noted on the terminal.

Rated voltage: 690 V

Approvals: UL

SPECIFICATIONS

Table 1/1						
Catalog Number	Height	Width	Depth	Material	Finish	Quick Ship
01135	26mm	28mm	72mm	Mild Steel	Plated	No
01318	43mm	38mm	92mm	Mild Steel	Plated	No
01760	43mm	40mm	96mm	Mild Steel	Plated	No

WARNING

nVent products shall be installed and used only as indicated in nVent's product instruction sheets and training materials. Instruction sheets are available at [www.nvent.com](http://www.nvent.com) and from your nVent customer service representative. Improper installation, misuse, misapplication or other failure to completely follow nVent's instructions and warnings may cause product malfunction, property damage, serious bodily injury and death and/or void your warranty.



Our powerful portfolio of brands:

CADDY   ERICO   HOFFMAN   ILSCO   SCHROFF   TRACHTE