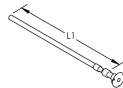
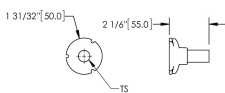


Earthbridge DB, One Stud, Insulated Cable, Straight



Earthbridges are assemblies made from a high-quality conductive earthpoint (connecting terminal) and various types of conductors. The nVent ERICO Cadweld exothermic connection process is used to combine them together, forming a highly corrosion resistant and long-lasting assembly.

DIAGRAMS



FEATURES

Long-lasting design

Low ground resistance and impedance

Superior electrical conductivity and resistance to corrosion

Electrically and mechanically robust and reliable

Easy to install

SPECIFICATIONS

Material: Copper

Earthpoint Type: DB, One Stud

Table 1/2

Catalog Number	Type	Conductor Type	Conductor Size	Length (L)	Diameter (Ø)	Thread Size (TS)
DB16N95S050C	DBNS	NY-0 cable	95 mm ² Stranded	500mm	50 mm	M16

CatalogNumber	Type	ConductorType	Conductor Size	Length (L)	Diameter (Ø)	Thread Size (TS)
DB16N70S050C	DBNS	NYY-0 cable	70 mm ² Stranded	500mm	50 mm	M16
DB10C702000	DBCS	Yellow-Green Insulated Cable, Straight	70 mm ² Stranded	2000mm	50 mm	M10
DB10C50S050H	DBCS	Yellow-Green Insulated Cable, Straight	50 mm ² Stranded	500mm	50 mm	M10
DB10C50S100HC	DBCS	Yellow-Green Insulated Cable, Straight	50 mm ² Stranded	1000mm	50 mm	M10
DB10C701000	DBCS	Yellow-Green Insulated Cable, Straight	70 mm ² Stranded	1000mm	50 mm	M10
DB16N70S100C	DBNS	NYY-0 cable	70 mm ² Stranded	1000mm	50 mm	M16
DB10C701500	DBCS	Yellow-Green Insulated Cable, Straight	70 mm ² Stranded	1500mm	50 mm	M10
DB10C70S050H	DBCS	Yellow-Green Insulated Cable, Straight	70 mm ² Stranded	500mm	50 mm	M10
DB16N95S100C	DBNS	NYY-0 cable	95 mm ² Stranded	1000mm	50 mm	M16

Table 2/2

Catalog Number	Rebar Assembly Type	Hardware Included	Earthbridge Application	Complies With
DB16N95S050C	Cadweld or Clamp	No	Building	RIL 997.02050A01 (Construction 2 Ik > 25 kA), EN IEC® 62561-1 Class H 100kA
DB16N70S050C	Cadweld or Clamp	No	Building	RIL 997.02050A01 (Construction 1 Ik 25 kA), EN IEC® 62561-1 Class H 100kA
DB10C702000	Cadweld or Clamp	Yes	Building	EN IEC® 62561-1 Class H 100kA
DB10C50S050H	Cadweld or Clamp	Yes	Building	EN IEC® 62561-1 Class H 100kA
DB10C50S100HC	Cadweld or Clamp	Yes	Building	EN IEC® 62561-1 Class H 100kA

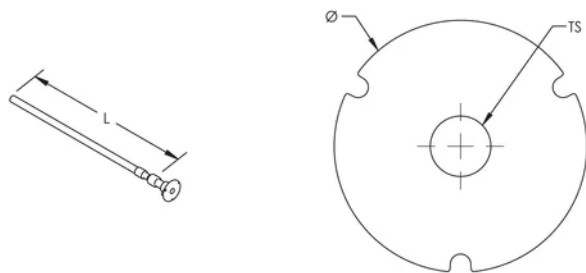
Catalog Number	Rebar Assembly Type	Hardware Included	Earthbridge Application	Complies With
DB10C701000	Cadweld or Clamp	Yes	Building	EN IEC® 62561-1 Class H 100kA
DB16N70S100C	Cadweld or Clamp	No	Building	RIL 997.02050A01 (Construction 1 Ik 25 kA), EN IEC® 62561-1 Class H 100kA
DB10C701500	Cadweld or Clamp	Yes	Building	EN IEC® 62561-1 Class H 100kA
DB10C70S050H	Cadweld or Clamp	Yes	Building	EN IEC® 62561-1 Class H 100kA
DB16N95S100C	Cadweld or Clamp	No	Building	RIL 997.02050A01 (Construction 2 Ik > 25 kA), EN IEC® 62561-1 Class H 100kA

ADDITIONAL PRODUCT DETAILS

Includes (1) brass bolt, (1) brass washer, (1) plastic cap, and (1) protective label.

DB-16-C-70-S-050-C		
DB	Earth Point	DB: 1 hole BT: 2 holes BF: 4 holes LU: M16 lug TA: tape
16	Thread Size	10: M10 12: M12 16: M16 40: Tape 40x5mm 30: Tape 30x4mm
C	Conductor Type	K: Steel Rond C: Y/G Cable T: Steel Bar F: Steel Bar 4mm N: NYY-O Cable H: N2XH-0 Cable
70	Conductor Size	12: D12mm 16: D16mm 30: 30x4mm 40: 40x5mm 50: 50mm ² 70: 70mm ² 95: 95mm ²
S	Conductor Angle	S: 0° P: 90° A: 45°
050	Length (cm)	xxx
x	Termination (option if cable)	SR: Solid Round EP: Earthpoint perpendicular ES: Earthpoint straight TA: Tape of 100mm TP: Tape of 150mm LU: M16 lug
x	Bolts & Washer	- : No Hardware H: With Hardware
C	Packaging	- : by unit (Made-to-Stock) C: 5 pieces (Made-to-Order) G: 25 pieces (Made-to-Order)

DIAGRAMS



WARNING

nVent products shall be installed and used only as indicated in nVent's product instruction sheets and training materials. Instruction sheets are available at www.nvent.com and from your nVent customer service representative. Improper installation, misuse, misapplication or other failure to completely follow nVent's instructions and warnings may cause product malfunction, property damage, serious bodily injury and death and/or void your warranty.

North America

+1.800.753.9221
Option 1 – Customer Care
Option 2 – Technical
Support

Europe

Netherlands:
+31 800-0200135
France:
+33 800 901 793

Europe

Germany:
800 1890272
Other Countries:
+31 13 5835404

APAC

Shanghai:
+ 86 21 2412 1618/19
Sydney:
+61 2 9751 8500



Our powerful portfolio of brands:

CADDY ERICO HOFFMAN ILSCO SCHROFF TRACHTE