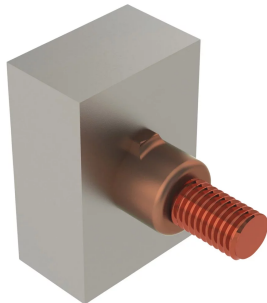


Copper or Steel Stud to Steel Surface



nVent ERICO Cadweld graphite molds are designed and engineered for thousands of connection styles and conductor combinations.

DIAGRAMS



FEATURES

Forms a permanent, low resistance connection

Provides a molecular bond

nVent ERICO Cadweld Exothermic Connections are rated with the same current capacity as the conductor

Portable installation equipment with no external source of power required

Installers can be easily trained to make nVent ERICO Cadweld Exothermic Connections

Connections can be visually inspected

SPECIFICATIONS

Table 1/1

Catalog Number	Mold Family	Stud Type	Connects To
HVD37CU	HV	1" Copper Stud	Steel Surface
HXC22	HX	1" Steel Stud	Steel Surface
HVC14CU	HV	1/2" Copper Stud	Steel Surface

Catalog Number	Mold Family	Stud Type	Connects To
HXC14CU	HX	1/2" Copper Stud	Steel Surface
HXC14	HX	1/2" Steel Stud	Steel Surface
HXC10	HX	1/4" Steel Stud	Steel Surface
HVC18	HV	3/4" Steel Stud	Steel Surface
HVC12CU	HV	3/8" Copper Stud	Steel Surface
HVC12	HV	3/8" Steel Stud	Steel Surface
HXC12	HX	3/8" Steel Stud	Steel Surface
HVC31CU	HV	5/8" Copper Stud	Steel Surface
HXC16	HX	5/8" Steel Stud	Steel Surface
HVCP120	HV	12 mm Steel Stud	Steel Surface
HXC13CU	HX	13 mm Copper Stud	Steel Surface

ADDITIONAL PRODUCT DETAILS

For applications such as computer room, tunnel or other low-ventilation areas, specify a smokeless nVent ERICO Cadweld Exolon mold. Add an XL prefix to the standard mold part number when ordering (for example, a TAC2Q2Q becomes XLTAC2Q2Q). Similarly, nVent ERICO Cadweld Exolon welding material is also designated by the XL prefix (for example, 150 becomes XL150).

A gap between conductors may be required. See mold tag for more information.

Stud is not included.

XX-X-XX-L-M-W		
XX	Mold Family	
X	Price Key	
XX	Stud Type	
L*	Split Crucible	Crucible section is split on molds designed with horizontal opening for easier cleaning
M*	Mold Only	
W*	Wear Plates	Reduce mechanical abrasion of molds at cable entry points

* Empty if none

WARNING

nVent products shall be installed and used only as indicated in nVent's product instruction sheets and training materials. Instruction sheets are available at www.nvent.com and from your nVent customer service representative. Improper installation, misuse, misapplication or other failure to completely follow nVent's instructions and warnings may cause product malfunction, property damage, serious bodily injury and death and/or void your warranty.

North America

+1.800.753.9221
 Option 1 – Customer Care
 Option 2 – Technical Support

Europe

Netherlands:
 +31 800-0200135
 France:
 +33 800 901 793

Europe

Germany:
 800 1890272
 Other Countries:
 +31 13 5835404

APAC

Shanghai:
 + 86 21 2412 1618/19
 Sydney:
 +61 2 9751 8500



Our powerful portfolio of brands:

CADDY ERICO HOFFMAN ILSCO SCHROFF TRACHTE