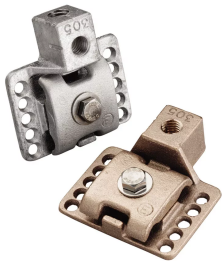
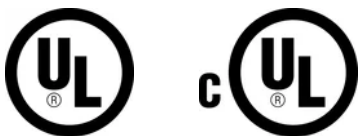


# Air Terminal Base, Imperial Thread



## CERTIFICATIONS



## FEATURES

Install with adhesive or screw down fixings

Mechanical connection recommended for vertical installation

Positive single bolt tension for multi-directional cable clamping

## SPECIFICATIONS

<b>Finish:</b>	Bare
<b>Conductor Size, UL:</b>	Class 1 - Class 2 (4/0 Max)
<b>Material:</b>	Copper

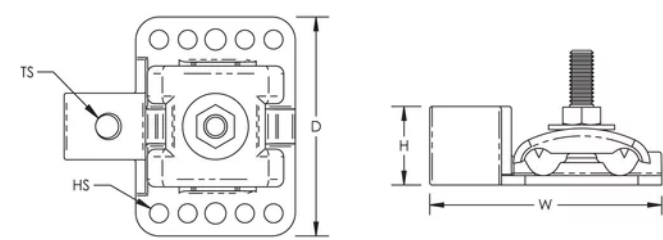
Table 1/2

Catalog Number	Thread Size (TS)	Mounting	Hole Size (HS)	Depth (D)	Height (H)	Width (W)
LPC30512	1/2" UNC	Horizontal or Vertical	6.35 mm	73.7mm	25.4 mm	77.9 mm
LPC30558H	5/8" UNC	Horizontal	6.35 mm	73.7mm	25.4 mm	77.9 mm

CatalogNumber	Thread Size (TS)	Mounting	Hole Size (HS)	Depth (D)	Height (H)	Width (W)
LPC30558V	5/8" UNC	Vertical	6.35 mm	73.7mm	25.4 mm	77.9 mm

Table 2/2	
Catalog Number	Unit Weight
LPC30512	0.38 kg
LPC30558H	0.38 kg
LPC30558V	0.38 kg

### DIAGRAMS



### WARNING

nVent products shall be installed and used only as indicated in nVent's product instruction sheets and training materials. Instruction sheets are available at [www.nvent.com](http://www.nvent.com) and from your nVent customer service representative. Improper installation, misuse, misapplication or other failure to completely follow nVent's instructions and warnings may cause product malfunction, property damage, serious bodily injury and death and/or void your warranty.

**⚠ WARNING:** This product can expose you to chemicals including lead, which is known to the State of California to cause cancer and birth defects or other reproductive harm. For more information go to [www.P65Warnings.ca.gov](http://www.P65Warnings.ca.gov).

#### North America

+1.800.753.9221

Option 1 – Customer Care

Option 2 – Technical

Support

#### Europe

Netherlands:

+31 800-0200135

France:

+33 800 901 793

#### Europe

Germany:

800 1890272

Other Countries:

+31 13 5835404

#### APAC

Shanghai:

+ 86 21 2412 1618/19

Sydney:

+61 2 9751 8500



Our powerful portfolio of brands:

**CADDY**

**ERICO**

**HOFFMAN**

**ILSCO**

**SCHROFF**

**TRACHTE**