

Heavy Duty Pipe Clamp per DIN 3567



FEATURES

For high static requirements in industrial construction

Suitable for fix point applications

Can be welded onto T-beam to form a sliding element

SPECIFICATIONS

Material: Steel

Table 1/2

Catalog Number	Article Number	Finish	Outer Diameter (OD)	NB/DN	Hole Size (HS)	Width (W)
DIN021HD	400197	Hot-Dip Galvanized	21.3 mm	15	11.5 mm	30 mm
DIN021PL	400149	Plain	21.3 mm	15	11.5 mm	30 mm
DIN027HD	400199	Hot-Dip Galvanized	26.9 mm	20	11.5 mm	30 mm
DIN027PL	400151	Plain	26.9 mm	20	11.5 mm	30 mm
DIN034HD	400201	Hot-Dip Galvanized	33.7 mm	25	11.5 mm	30 mm
DIN034PL	400153	Plain	33.7 mm	25	11.5 mm	30 mm

CatalogNumber	Article Number	Finish	Outer Diameter (OD)	NB/DN	Hole Size (HS)	Width (W)
DIN042HD	400203	Hot-Dip Galvanized	42.4 mm	32	11.5 mm	30 mm
DIN042PL	400155	Plain	42.4 mm	32	11.5 mm	30 mm
DIN048HD	400205	Hot-Dip Galvanized	48.3 mm	40	11.5 mm	30 mm
DIN048PL	400157	Plain	48.3 mm	40	11.5 mm	30 mm
DIN060HD	400208	Hot-Dip Galvanized	60.3 mm	50	14 mm	40 mm
DIN060PL	400160	Plain	60.3 mm	50	14 mm	40 mm
DIN076HD	400210	Hot-Dip Galvanized	76.1 mm	65	14 mm	40 mm
DIN076PL	400162	Plain	76.1 mm	65	14 mm	40 mm
DIN089HD	400212	Hot-Dip Galvanized	88.9 mm	80	14 mm	40 mm
DIN089PL	400164	Plain	88.9 mm	80	14 mm	40 mm
DIN102HD	400214	Hot-Dip Galvanized	102 mm	90	18 mm	50 mm
DIN102PL	400166	Plain	102 mm	90	18 mm	50 mm
DIN114HD	400216	Hot-Dip Galvanized	114.3 mm	100	18 mm	50 mm
DIN114PL	400168	Plain	114.3 mm	100	18 mm	50 mm
DIN140HD	400219	Hot-Dip Galvanized	139.7 mm	125	18 mm	50 mm
DIN140PL	400171	Plain	139.7 mm	125	18 mm	50 mm
DIN168HD	400222	Hot-Dip Galvanized	168.3 mm	150	18 mm	50 mm
DIN168PL	400174	Plain	168.3 mm	150	18 mm	50 mm

CatalogNumber	Article Number	Finish	Outer Diameter (OD)	NB/DN	Hole Size (HS)	Width (W)
DIN219HD	400225	Hot-Dip Galvanized	219.1 mm	200	18 mm	50 mm
DIN219PL	400177	Plain	219.1 mm	200	18 mm	50 mm
DIN273HD	400229	Hot-Dip Galvanized	273 mm	250	23 mm	60 mm
DIN273PL	400181	Plain	273 mm	250	23 mm	60 mm
DIN323HD	400233	Hot-Dip Galvanized	323.9 mm	300	23 mm	60 mm
DIN323PL	400185	Plain	323.9 mm	300	23 mm	60 mm
DIN355HD	400234	Hot-Dip Galvanized	355.6 mm	350	23 mm	60 mm
DIN355PL	400186	Plain	355.6 mm	350	23 mm	60 mm
DIN406HD	400236	Hot-Dip Galvanized	406.4 mm	400	27 mm	70 mm
DIN406PL	400188	Plain	406.4 mm	400	27 mm	70 mm
DIN457HD	400238	Hot-Dip Galvanized	457 mm	450	27 mm	70 mm
DIN457PL	400190	Plain	457 mm	450	27 mm	70 mm
DIN508HD	400239	Hot-Dip Galvanized	508 mm	500	27 mm	70 mm
DIN508PL	400191	Plain	508 mm	500	27 mm	70 mm
DIN610HD	400241	Hot-Dip Galvanized	610 mm	600	27 mm	70 mm
DIN610PL	400193	Plain	610 mm	600	27 mm	70 mm

Table 2/2

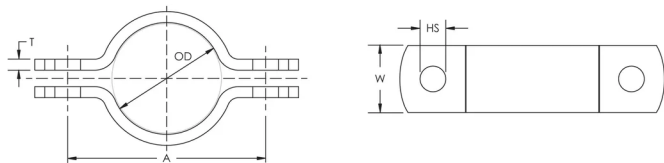
Catalog Number	Article Number	Thickness (T)	A
DIN021HD	400197	5 mm	58 mm

Catalog Number	Article Number	Thickness (T)	A
DIN021PL	400149	5 mm	58 mm
DIN027HD	400199	5 mm	64 mm
DIN027PL	400151	5 mm	64 mm
DIN034HD	400201	5 mm	72 mm
DIN034PL	400153	5 mm	72 mm
DIN042HD	400203	5 mm	82 mm
DIN042PL	400155	5 mm	82 mm
DIN048HD	400205	5 mm	88 mm
DIN048PL	400157	5 mm	88 mm
DIN060HD	400208	6 mm	108 mm
DIN060PL	400160	6 mm	108 mm
DIN076HD	400210	6 mm	122 mm
DIN076PL	400162	6 mm	122 mm
DIN089HD	400212	6 mm	136 mm
DIN089PL	400164	6 mm	136 mm
DIN102HD	400214	8 mm	166 mm
DIN102PL	400166	8 mm	166 mm
DIN114HD	400216	8 mm	178 mm

Catalog Number	Article Number	Thickness (T)	A
DIN114PL	400168	8 mm	178 mm
DIN140HD	400219	8 mm	204 mm
DIN140PL	400171	8 mm	204 mm
DIN168HD	400222	8 mm	232 mm
DIN168PL	400174	8 mm	232 mm
DIN219HD	400225	8 mm	284 mm
DIN219PL	400177	8 mm	284 mm
DIN273HD	400229	8 mm	348 mm
DIN273PL	400181	8 mm	348 mm
DIN323HD	400233	8 mm	398 mm
DIN323PL	400185	8 mm	398 mm
DIN355HD	400234	8 mm	432 mm
DIN355PL	400186	8 mm	432 mm
DIN406HD	400236	10 mm	498 mm
DIN406PL	400188	10 mm	498 mm
DIN457HD	400238	10 mm	548 mm
DIN457PL	400190	10 mm	548 mm
DIN508HD	400239	10 mm	600 mm

Catalog Number	Article Number	Thickness (T)	A
DIN508PL	400191	10 mm	600 mm
DIN610HD	400241	10 mm	710 mm
DIN610PL	400193	10 mm	710 mm

DIAGRAMS



WARNING

nVent products shall be installed and used only as indicated in nVent's product instruction sheets and training materials. Instruction sheets are available at www.nvent.com and from your nVent customer service representative. Improper installation, misuse, misapplication or other failure to completely follow nVent's instructions and warnings may cause product malfunction, property damage, serious bodily injury and death and/or void your warranty.

North America

+1.800.753.9221
Option 1 – Customer Care
Option 2 – Technical
Support

Europe

Netherlands:
+31 800-0200135
France:
+33 800 901 793

Europe

Germany:
800 1890272
Other Countries:
+31 13 5835404

APAC

Shanghai:
+ 86 21 2412 1618/19
Sydney:
+61 2 9751 8500



Our powerful portfolio of brands:

CADDY ERICO HOFFMAN ILSCO SCHROFF TRACHTE

