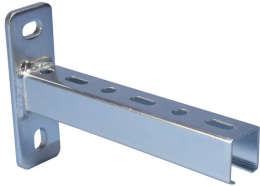


Cantilever Arm with E0 Channel



CERTIFICATIONS



FEATURES

Perforated, cold rolled

Slotted backplate

SPECIFICATIONS

Finish: Electrogalvanized

Material: Steel

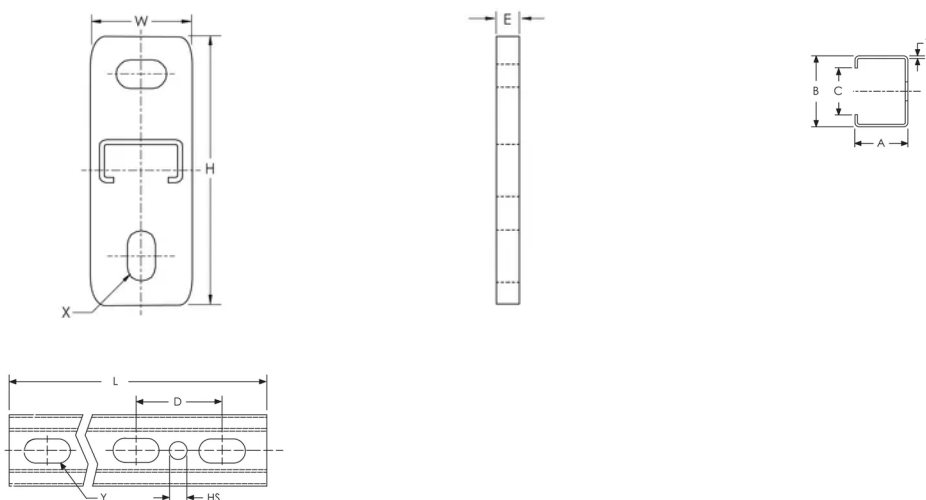
Table 1/1

Catalog Number	Article Number	Length (L)
CE015H0780EG	599930	780mm
CE015H0660EG	599925	660mm
CE015H0240EG	599890	240mm

Catalog Number	Article Number	Length (L)
CE015H0540EG	599920	540mm
CE015H0180EG	599885	180mm
CE015H0300EG	599900	300mm
CE015H0420EG	599910	420mm
CE015H0360EG	599905	360mm

Thickness (T): 1.5 mm
E: 6 mm
Y: 8.5 x 20 mm
Hole Size (HS): 10.5 mm
X: 11 x 18 mm
C: 15.5 mm
B: 27 mm
A: 30 mm
Width (W): 40 mm
D: 60 mm
Height (H): 120 mm

DIAGRAMS



WARNING

nVent products shall be installed and used only as indicated in nVent's product instruction sheets and training materials. Instruction sheets are available at www.nvent.com and from your nVent customer service representative. Improper

installation, misuse, misapplication or other failure to completely follow nVent's instructions and warnings may cause product malfunction, property damage, serious bodily injury and death and/or void your warranty.

North America

+1.800.753.9221
Option 1 – Customer Care
Option 2 – Technical
Support

Europe

Netherlands:
+31 800-0200135
France:
+33 800 901 793

Europe

Germany:
800 1890272
Other Countries:
+31 13 5835404

APAC

Shanghai:
+ 86 21 2412 1618/19
Sydney:
+61 2 9751 8500



Our powerful portfolio of brands:

CADDY ERICO HOFFMAN ILSCO SCHROFF TRACHTE

