

# Cable Tie Holder with Flange Clip



## CERTIFICATIONS



## FEATURES

Used to support cables from beam flanges

Requires only a hammer to install

## SPECIFICATIONS

Table 1/2

Catalog Number	Article Number	Material	Finish	Flange Thickness (FT)	A	B
2H4CT	178510	Spring Steel	nVent CADDY Armour	2 - 3 mm	9 mm	2 mm
4H1318CT	178545	Spring Steel	nVent CADDY Armour	21 - 28 mm	9 mm	2 mm
4H24CT	178520	Spring Steel	nVent CADDY Armour	3 - 8 mm	9 mm	2 mm
4H24CTR5	191021	Spring Steel	nVent CADDY Armour	3 - 8 mm	9 mm	2 mm

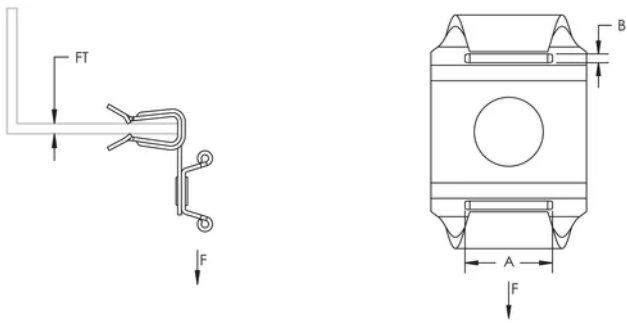
CatalogNumber	Article Number	Material	Finish	Flange Thickness (FT)	A	B
4H24CTS1	160500	Stainless Steel 301 (EN 1.4310)		3 - 8 mm	9 mm	2 mm
4H58CT	178530	Spring Steel	nVent CADDY Armour	8 - 14 mm	9 mm	2 mm
4H58CTR5	191022	Spring Steel	nVent CADDY Armour	8 - 14 mm	9 mm	2 mm
4H58CTS1	170430	Stainless Steel 301 (EN 1.4310)		8 - 14 mm	9 mm	2 mm
4H58CTSP25	172360	Spring Steel	nVent CADDY Armour	8 - 14 mm	9 mm	2 mm
4H912CT	178540	Spring Steel	nVent CADDY Armour	14 - 20 mm	9 mm	2 mm
4H912CTR5	191023	Spring Steel	nVent CADDY Armour	14 - 20 mm	9 mm	2 mm
4H912CTS1	170700	Stainless Steel 301 (EN 1.4310)		14 - 20 mm	9 mm	2 mm
4H912CTSP25	172390	Spring Steel	nVent CADDY Armour	14 - 20 mm	9 mm	2 mm

Table 2/2

Catalog Number	Article Number	Static Load	Certifications
2H4CT	178510	150N	ITB
4H1318CT	178545	150N	
4H24CT	178520	150N	ITB
4H24CTR5	191021	150N	
4H24CTS1	160500	150N	
4H58CT	178530	150N	ITB
4H58CTR5	191022	150N	

Catalog Number	Article Number	Static Load	Certifications
4H58CTS1	170430	150N	
4H58CTSP25	172360	150N	
4H912CT	178540	150N	ITB
4H912CTR5	191023	150N	
4H912CTS1	170700	150N	
4H912CTSP25	172390	150N	

## DIAGRAMS



## WARNING

nVent products shall be installed and used only as indicated in nVent's product instruction sheets and training materials. Instruction sheets are available at [www.nvent.com](http://www.nvent.com) and from your nVent customer service representative. Improper installation, misuse, misapplication or other failure to completely follow nVent's instructions and warnings may cause product malfunction, property damage, serious bodily injury and death and/or void your warranty.

#### North America

+1.800.753.9221

Option 1 – Customer Care

Option 2 – Technical

Support

#### Europe

Netherlands:

+31 800-0200135

France:

+33 800 901 793

#### Europe

Germany:

800 1890272

Other Countries:

+31 13 5835404

#### APAC

Shanghai:

+ 86 21 2412 1618/19

Sydney:

+61 2 9751 8500



Our powerful portfolio of brands:

**CADDY**

**ERICO**

**HOFFMAN**

**ILSCO**

**SCHROFF**

**TRACHTE**

