

# Cable Tie with Flange Clip



## CERTIFICATIONS



## FEATURES

Used to support cables from beam flanges

Requires only a hammer to install

Comes complete with zip-tie

## SPECIFICATIONS

Table 1/2

Catalog Number	Article Number	Material	Finish	Flange Thickness (FT)	Cable Tie	Diameter (Ø)
2H4CTBB	170210	Spring Steel	nVent CADDY Armour	2 - 3 mm	Nylon Black	10 - 70 mm
2H4CTBW	170170	Spring Steel	nVent CADDY Armour	2 - 3 mm	Nylon White	10 - 70 mm
4H24CTBB	170220	Spring Steel	nVent CADDY Armour	3 - 8 mm	Nylon Black	10 - 70 mm
4H24CTBRS1	170280	Stainless Steel 301 (EN 1.4310)		3 - 8 mm	Stainless Steel 302 (EN 1.4324)	25 - 51 mm

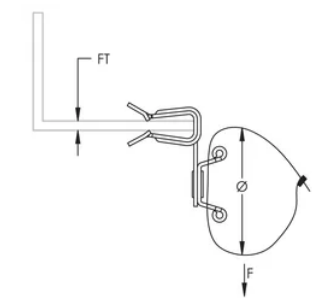
CatalogNumber	Article Number	Material	Finish	Flange Thickness (FT)	Cable Tie	Diameter (Ø)
4H24CTBW	170180	Spring Steel	nVent CADDY Armour	3 - 8 mm	Nylon White	10 - 70 mm
4H58CTBB	170240	Spring Steel	nVent CADDY Armour	8 - 14 mm	Nylon Black	10 - 70 mm
4H58CTBRS1	170300	Stainless Steel 301 (EN 1.4310)		8 - 14 mm	Stainless Steel 302 (EN 1.4324)	25 - 51 mm
4H58CTBW	170190	Spring Steel	nVent CADDY Armour	8 - 14 mm	Nylon White	10 - 70 mm
4H912CTBB	170260	Spring Steel	nVent CADDY Armour	14 - 20 mm	Nylon Black	10 - 70 mm
4H912CTBW	170200	Spring Steel	nVent CADDY Armour	14 - 20 mm	Nylon White	10 - 70 mm
4H912CTBRS1	170310	Stainless Steel 301 (EN 1.4310)		14 - 20 mm	Stainless Steel 302 (EN 1.4324)	25 - 51 mm

Table 2/2

Catalog Number	Article Number	Static Load	Certifications
2H4CTBB	170210	150N	ITB
2H4CTBW	170170	150N	ITB
4H24CTBB	170220	150N	ITB
4H24CTBRS1	170280	300N	
4H24CTBW	170180	150N	ITB
4H58CTBB	170240	150N	ITB
4H58CTBRS1	170300	300N	
4H58CTBW	170190	150N	ITB
4H912CTBB	170260	150N	ITB

Catalog Number	Article Number	Static Load	Certifications
4H912CTBW	170200	150N	ITB
4H912CTBRS1	170310	300N	

### DIAGRAMS



### WARNING

nVent products shall be installed and used only as indicated in nVent's product instruction sheets and training materials. Instruction sheets are available at [www.nvent.com](http://www.nvent.com) and from your nVent customer service representative. Improper installation, misuse, misapplication or other failure to completely follow nVent's instructions and warnings may cause product malfunction, property damage, serious bodily injury and death and/or void your warranty.

#### North America

+1.800.753.9221  
 Option 1 – Customer Care  
 Option 2 – Technical Support

#### Europe

Netherlands:  
 +31 800-0200135  
 France:  
 +33 800 901 793

#### Europe

Germany:  
 800 1890272  
 Other Countries:  
 +31 13 5835404

#### APAC

Shanghai:  
 + 86 21 2412 1618/19  
 Sydney:  
 +61 2 9751 8500



Our powerful portfolio of brands:

CADDY   ERICO   HOFFMAN   ILSCO   SCHROFF   TRACHTE

