

610 One-Rod Roller Hanger



FEATURES

Suspend pipe from a single hanger rod where longitudinal movement may occur in the pipe due to expansion or contraction

Conforms with Federal Specification WW-H-171 (Type 44), Manufacturers Standardization Society ANSI®/MSS-SP-58 (Type 43)

SPECIFICATIONS

Material: Steel;Cast Iron

Finish: Hot-Dip Galvanized;Electrogalvanized

Table 1/1

Catalog Number	Rod Size (RS)	A	B	Static Load
6100350HD	M12	178 mm	66.68 mm	1735N
6100400HD	M16	190.5 mm	69.9 mm	2115N
6101400HD	M24	479 mm	212.7 mm	5340N
6101600HD	M24	527.1 mm	241.3 mm	5340N
6101800HD	M24	603.3 mm	266.7 mm	6230N
6102000HD	M32	660.4 mm	295.3 mm	7115N

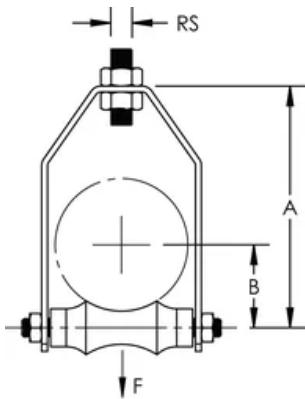
Catalog Number	Rod Size (RS)	A	B	Static Load
6102400HD	M32	787.4 mm	350.8 mm	7115N

ADDITIONAL PRODUCT DETAILS

Yoke and axle are carbon steel (electrogalvanized) and roll is cast iron (hot-dip galvanized).

Install in accordance with applicable code.

DIAGRAMS



WARNING

nVent products shall be installed and used only as indicated in nVent's product instruction sheets and training materials. Instruction sheets are available at www.nvent.com and from your nVent customer service representative. Improper installation, misuse, misapplication or other failure to completely follow nVent's instructions and warnings may cause product malfunction, property damage, serious bodily injury and death and/or void your warranty.

North America

+1.800.753.9221

Option 1 – Customer Care

Option 2 – Technical

Support

Europe

Netherlands:

+31 800-0200135

France:

+33 800 901 793

Europe

Germany:

800 1890272

Other Countries:

+31 13 5835404

APAC

Shanghai:

+ 86 21 2412 1618/19

Sydney:

+61 2 9751 8500



Our powerful portfolio of brands:

CADDY

ERICO

HOFFMAN

ILSCO

SCHROFF

TRACHTE

