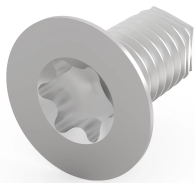


# Countersunk Screw, Torx

For screwing or riveting to PCBs.



## CERTIFICATIONS



## FEATURES

For screwing of Subrack or Case accessories

## SPECIFICATIONS

**Product Family:** EuropacPRO; RatiopacPRO; RatiopacPRO AIR; CompacPRO; PropacPRO; MultipacPRO

**Type:** Countersunk Screw

**Product Type:** Screw

Table 1/2

Catalog Number	Length	Material	Finish	Package Quantity	Thread Size	Works With
24571-373	8mm	Steel	Nickel Plated	100	M4	RatiopacPRO
24560-146	5mm	Steel	Nickel Plated	100	M2.5	Subracks, Cases, Chassis

Table 2/2

Catalog Number	Torque	Certifications	Quick Ship
----------------	--------	----------------	------------

24571-373	2.4N·m		No
24560-146		RoHS	No

**WARNING**

nVent products shall be installed and used only as indicated in nVent's product instruction sheets and training materials. Instruction sheets are available at [www.nvent.com](http://www.nvent.com) and from your nVent customer service representative. Improper installation, misuse, misapplication or other failure to completely follow nVent's instructions and warnings may cause product malfunction, property damage, serious bodily injury and death and/or void your warranty.

**North America**

All locations  
+1.763.422.2661  
Chat with us:  
[nvent.com/schroff](http://nvent.com/schroff)

**Europe**

Straubenhardt, Germany  
+49.7082.794.0  
Betschdorf, France  
+33.3.88.90.64.90  
Warsaw, Poland  
+48.22.209.98.35  
Assago, Italy  
+39.02.932.7141  
Chat with us:  
[nvent.com/schroff](http://nvent.com/schroff)

**Asia**

Shanghai, China  
+86.21.2412.6943  
Qingdao, China  
+86.532.8771.6101  
Singapore  
+65.6768.5800  
Shin-Yokohama, Japan  
+81.45.476.0271  
Chat with us:  
[nvent.com/schroff](http://nvent.com/schroff)

**Middle East & India**

Dubai, United Arab Emirates  
+971.4.378.1700  
Bangalore, India  
+91.80.6715.2001  
Istanbul, Turkey  
+90.216.250.7374  
Chat with us:  
[nvent.com/schroff](http://nvent.com/schroff)



Our powerful portfolio of brands:

**CADDY   ERICO   HOFFMAN   ILSCO   SCHROFF   TRACHTE**