

nVent ERICO Ericontact Double Rail Contact, 13.5–16.5 mm Rail Web Thickness, M12 Screw, 70 mm Screw, Steel Nut

CATALOG NUMBER

DSK191516L



The nVent ERICO Ericontact series of rail contacts provides a superior quality connection to the rail web with a very low contact resistance. The contacts are quickly and easily fitted by means of an insertion tool, regardless of weather conditions. All nVent ERICO Ericontact components are manufactured according to high standards and norms. Tested to the most demanding requirements of the Rail Industry Standards, nVent ERICO Ericontact is the ideal solution for mechanically applied connections such as signal engineering, earthing (grounding), or traction return current.

The nVent ERICO Ericontact Double Rail Contact series offers connections on both sides of the rail web. This is a significant advantage when making interconnections in the station area, for example. The nVent ERICO Ericontact Double Contact is ideal solution in confined spaces. With a clearance of only 50 mm between the rail heads, the nVent ERICO Ericontact can still be inserted and the cable lug connected from both sides.

FEATURES

Easy to install

Very low contact resistance ($< 5 \mu\Omega$)

Same electrical resistance on the two sides of the contact

The contact surface of the two copper bushes is made inside the rail

PRODUCT ATTRIBUTES

Rail Web Thickness: 13.5 - 16.5 mm

Rail Type: 100 lb ARAB;115 lb AREA;127 lb NYC;132 lb RE;85 lb ASCE;AS50;AS60

Drill Hole Diameter: 19mm

Screw Diameter (Sc): 12

Screw Length (L): 70mm

Washer Inner Diameter: 13mm

Washer Outer Diameter: 24mm

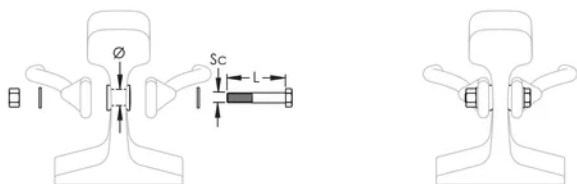
Nut Material: Electroplated Steel

ADDITIONAL PRODUCT DETAILS

Kit includes: (1) hex-head stainless steel 304 bolt, (1) electrolytically tin-plated copper bush set (2 parts), (2) stainless steel 304 round washers, and (1) hexagonal stainless steel 304 nut or (1) electroplated steel nut (depending on contact type).

The washer and nut for DSK13518 are integrated into one piece.

DIAGRAMS



WARNING

nVent products shall be installed and used only as indicated in nVent's product instruction sheets and training materials. Instruction sheets are available at www.nvent.com and from your nVent customer service representative. Improper installation, misuse, misapplication or other failure to completely follow nVent's instructions and warnings may cause product malfunction, property damage, serious bodily injury and death and/or void your warranty.

North America

+1.800.753.9221

Option 1 – Customer Care

Option 2 – Technical

Support

Europe

Netherlands:

+31 800-0200135

France:

+33 800 901 793

Europe

Germany:

800 1890272

Other Countries:

+31 13 5835404

APAC

Shanghai:

+ 86 21 2412 1618/19

Sydney:

+61 2 9751 8500



Our powerful portfolio of brands:

CADDY

ERICO

HOFFMAN

ILSCO

SCHROFF

TRACHTE